

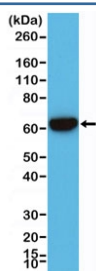
## Recombinant Cytokeratin 5/6 Antibody [clone RM341] (R20364)

Catalog No.	Formulation	Size
R20364-0.1ML	Antibody in PBS with 50% glycerol, 1% BSA and 0.09% sodium azide	100 ul

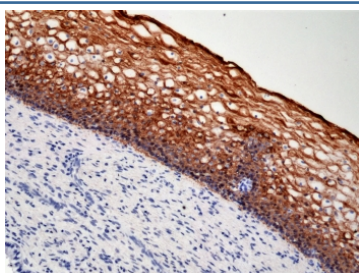
Recombinant **RABBIT MONOCLONAL**

[Bulk quote request](#)

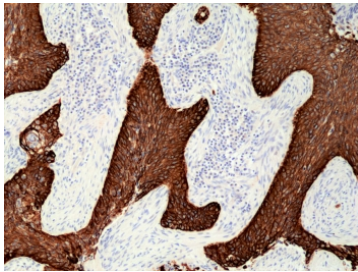
Availability	1-3 business days
Species Reactivity	Human
Format	Purified
Clonality	Recombinant Rabbit Monoclonal
Isotype	Rabbit IgG
Clone Name	RM341
Purity	Protein A purified from animal origin-free supernatant
UniProt	P13647, P02538
Localization	Cytoplasmic
Applications	Immunohistochemistry (FFPE) : 1:500 -1:1000 Western Blot : 1:2000-1:4000
Limitations	This recombinant Cytokeratin 5/6 antibody is available for research use only.



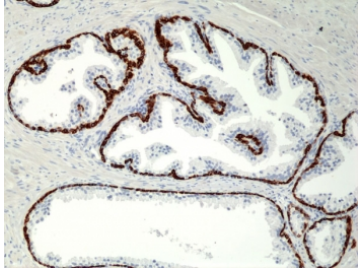
Western blot testing of human A431 cell lysate with recombinant Cytokeratin 5/6 antibody. Predicted molecular weight: ~62 kDa (KRT5) and ~60 kDa (KRT6).



IHC staining of FFPE human cervix tissue with recombinant Cytokeratin 5/6 antibody at 1:1000.



IHC staining of FFPE human lung squamous cell carcinoma tissue with recombinant Cytokeratin 5/6 antibody at 1:1000.



IHC staining of FFPE human prostate tissue with recombinant Cytokeratin 5/6 antibody at 1:1000.

## Description

This antibody reacts to both human CK-5 (Cytokeratin 5) and CK-6 (Cytokeratin 6).

## Application Notes

The stated application concentrations are suggested starting points. Titration of the recombinant Cytokeratin 5/6 antibody may be required due to differences in protocols and secondary/substrate sensitivity.

## Immunogen

A peptide corresponding to the C-terminus of human Cytokeratin 5 was used as the immunogen for the recombinant Cytokeratin 5/6 antibody.

## Storage

Store the recombinant Cytokeratin 5/6 antibody at -20°C.