

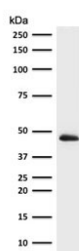
Recombinant Cytokeratin 19 Antibody / Rabbit Monoclonal [clone CTKN19-2R] (V3743)

Catalog No.	Formulation	Size
V3743-100UG	0.2 mg/ml in 1X PBS with 0.1 mg/ml BSA (US sourced) and 0.05% sodium azide	100 ug
V3743-20UG	0.2 mg/ml in 1X PBS with 0.1 mg/ml BSA (US sourced) and 0.05% sodium azide	20 ug
V3743SAF-100UG	1 mg/ml in 1X PBS; BSA free, sodium azide free	100 ug
V3743IHC-7ML	Prediluted in 1X PBS with 0.1 mg/ml BSA (US sourced) and 0.05% sodium azide; *For IHC use only*	7 ml

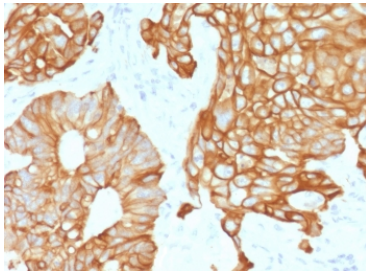
Recombinant RABBIT MONOCLONAL

[Bulk quote request](#)

Availability	1-3 business days
Species Reactivity	Human
Format	Purified
Clonality	Recombinant Rabbit Monoclonal
Isotype	Rabbit IgG, kappa
Clone Name	CTKN19-2R
Purity	Protein A affinity chromatography
UniProt	P08727
Localization	Cytoplasmic, cell membrane, secreted
Applications	Western Blot : 1-2ug/ml Immunohistochemistry (FFPE) : 1-2ug/ml for 30 min at RT Prediluted IHC Only Format : incubate for 30 min at RT (1)
Limitations	This recombinant Cytokeratin 19 antibody is available for research use only.



Western blot testing of human HepG2 antibody with Cytokeratin 19 antibody (clone CTKN19-2R). Predicted molecular weight ~43 kDa.



IHC testing of FFPE human colon tissue with recombinant Cytokeratin 19 antibody (clone CTKN19-2R). Required HIER: boil tissue sections in pH6, 10mM citrate buffer, for 10-20 min followed by cooling at RT for 20 min.

Description

Keratin 19 is a type I keratin. The type I cytokeratins consist of acidic proteins which are arranged in pairs of heterotypic keratin chains. Unlike its related family members, this smallest known acidic cytokeratin is not paired with a basic cytokeratin in epithelial cells. It is specifically found in the periderm, the transiently superficial layer that envelops the developing epidermis. [Wiki]

Application Notes

The stated application concentrations are suggested starting points. Titration of the recombinant Cytokeratin 19 antibody may be required due to differences in protocols and secondary/substrate sensitivity.

1. The prediluted format is supplied in a dropper bottle and is optimized for use in IHC. After epitope retrieval step (if required), drip mAb solution onto the tissue section and incubate at RT for 30 min.

Immunogen

Human mammary epithelial organoids were used as the immunogen for the recombinant Cytokeratin 19 antibody.

Storage

Store the recombinant Cytokeratin 19 antibody at 2-8oC (with azide) or aliquot and store at -20oC or colder (without azide).