

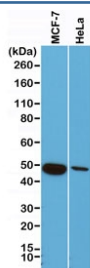
Recombinant Cytokeratin 18 Antibody [clone RM279] (R20296)

Catalog No.	Formulation	Size
R20296-0.1ML	Antibody in PBS with 50% glycerol, 1% BSA and 0.09% sodium azide	100 ul

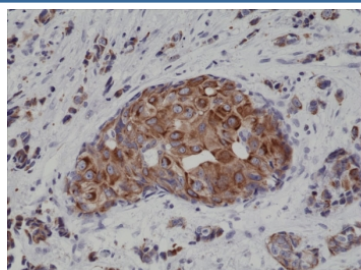
Recombinant **RABBIT MONOCLONAL**

[Bulk quote request](#)

Availability	1-3 business days
Species Reactivity	Human
Format	Purified
Clonality	Recombinant Rabbit Monoclonal
Isotype	Rabbit IgG
Clone Name	RM279
Purity	Protein A purified from animal origin-free supernatant
UniProt	P05783
Gene ID	3875
Localization	Cytoplasmic
Applications	Immunohistochemistry (FFPE) : 1:1000-1:4000 (1) Western Blot : 1:1000-1:2000
Limitations	This recombinant Cytokeratin 18 antibody is available for research use only.



Western blot of human MCF7 and HeLa cell lysate using recombinant Cytokeratin 18 antibody at 1:1000. Predicted molecular weight ~48 kDa.



IHC testing of FFPE human breast cancer tissue with recombinant Cytokeratin 18 antibody at 1:4000.

Description

This recombinant Cytokeratin 18 antibody reacts to human CK18/Cytokeratin-18.

Application Notes

The stated application concentrations are suggested starting points. Titration of the recombinant Cytokeratin 18 antibody may be required due to differences in protocols and secondary/substrate sensitivity.

1. A pH6 Citrate buffer or pH9 Tris/EDTA buffer HIER step is recommended for testing of FFPE tissue sections.

Immunogen

A peptide corresponding to the N-terminus of human Cytokeratin 18 was used as the immunogen for this recombinant Cytokeratin 18 antibody.

Storage

Store the recombinant Cytokeratin 18 antibody at -20oC (with glycerol) or aliquot and store at -20oC (without glycerol).