

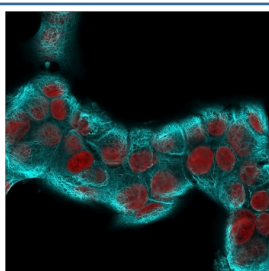
## Recombinant Cytokeratin 18 Antibody [clone KRT18/2819R] (V7299)

Catalog No.	Formulation	Size
V7299-100UG	0.2 mg/ml in 1X PBS with 0.1 mg/ml BSA (US sourced) and 0.05% sodium azide	100 ug
V7299-20UG	0.2 mg/ml in 1X PBS with 0.1 mg/ml BSA (US sourced) and 0.05% sodium azide	20 ug
V7299SAF-100UG	1 mg/ml in 1X PBS; BSA free, sodium azide free	100 ug
V7299IHC-7ML	Prediluted in 1X PBS with 0.1 mg/ml BSA (US sourced) and 0.05% sodium azide; *For IHC use only*	7 ml

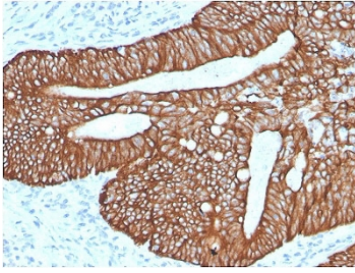
Recombinant **RABBIT MONOCLONAL**

[Bulk quote request](#)

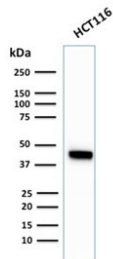
<b>Availability</b>	1-3 business days
<b>Species Reactivity</b>	Human
<b>Format</b>	Purified
<b>Clonality</b>	Recombinant Rabbit Monoclonal
<b>Isotype</b>	Rabbit IgG, kappa
<b>Clone Name</b>	KRT18/2819R
<b>Purity</b>	Protein A affinity chromatography
<b>UniProt</b>	P05783
<b>Localization</b>	Cytoplasmic
<b>Applications</b>	Flow Cytometry : 1-2ug/10 <sup>6</sup> cells Western Blot : 1-2ug/ml Immunofluorescence : 1-2ug/ml Immunohistochemistry (FFPE) : 1-2ug/ml for 30 min at RT
<b>Limitations</b>	This recombinant Cytokeratin 18 antibody is available for research use only.



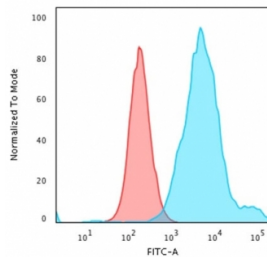
Immunofluorescent staining of permeabilized human MCF7 cells with recombinant Cytokeratin 18 antibody (clone KRT18/2819R, blue) and Reddot nuclear stain (red).



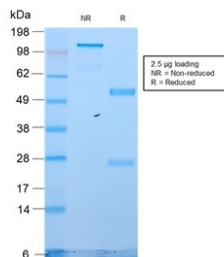
IHC staining of FFPE human colon carcinoma with recombinant Cytokeratin 18 antibody (clone KRT18/2819R). Required HIER: boil tissue sections in pH 9 10mM Tris with 1mM EDTA for 10-20 min and allow to cool before testing.



Western blot testing of human HCT116 antibody with recombinant Cytokeratin 18 antibody (clone KRT18/2819R). Predicted molecular weight ~48 kDa.



Flow cytometry testing of PFA-fixed human HeLa cells with recombinant Cytokeratin 18 antibody (clone KRT18/2819R); Red=isotype control, Blue= recombinant Cytokeratin 18 antibody.



SDS-PAGE analysis of purified, BSA-free recombinant Cytokeratin 18 antibody (clone KRT18/2819R) as confirmation of integrity and purity.

## Description

This MAb reacts with a wide variety of simple epithelia. It does not react with stratified squamous epithelia. It reacts with epithelial tumors of the gastrointestinal tract, lung, breast, pancreas, ovary, and thyroid. Cytokeratin 18, which belongs to the type A (acidic) subfamily of low molecular weight keratins, exists in combination with cytokeratin 8. It was reported that tissues from gastrointestinal tract are positive for both cytokeratin 8 and 18 but do not contain cytokeratin 14. Tissues from gastrointestinal tract, respiratory tract and urogenital tract, as well as endocrine and exocrine tissues and mesothelial cells are positive for cytokeratin 18.

## Application Notes

Optimal dilution of the recombinant Cytokeratin 18 antibody should be determined by the researcher.

1. The prediluted format is supplied in a dropper bottle and is optimized for use in IHC. After epitope retrieval step (if required), drip mAb solution onto the tissue section and incubate at RT for 30 min.

## Immunogen

Full length recombinant human protein was used as the immunogen for the recombinant Cytokeratin 18 antibody.

## Storage

Store the recombinant Cytokeratin 18 antibody at 2-8oC (with azide) or aliquot and store at -20oC or colder (without azide).