

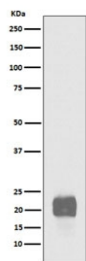
Recombinant CRIPTO Antibody [clone 21T86] (RQ8874)

Catalog No.	Formulation	Size
RQ8874	Antibody in PBS with 0.02% sodium azide, 50% glycerol and 0.4-0.5mg/ml BSA	100 ul

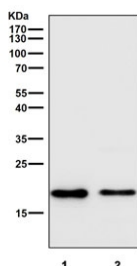
Recombinant **RABBIT MONOCLONAL**

[Bulk quote request](#)

Availability	1-3 days
Species Reactivity	Human
Format	Purified
Clonality	Recombinant Rabbit Monoclonal
Isotype	Rabbit IgG
Clone Name	21T86
Purity	Affinity chromatography
UniProt	Q9UKX7
Applications	Western Blot : 1:500-1:2000
Limitations	This recombinant CRIPTO antibody is available for research use only.



Western blot testing of human NCCIT cell lysate with recombinant CRIPTO antibody. Predicted molecular weight ~21 kDa.



Western blot testing of human 1) HepG2 and 2) MCF7 cell lysate with recombinant CRIPTO antibody. Predicted molecular weight ~21 kDa.

Description

GPI-anchored cell membrane protein involved in Nodal signaling. Cell-associated CRIPTO acts as a Nodal coreceptor in cis. Shedding of CRIPTO by TMEM8A modulates Nodal signaling by allowing soluble CRIPTO to act as a Nodal coreceptor on other cells. [UniProt]

Application Notes

Optimal dilution of the recombinant CRIPTO antibody should be determined by the researcher.

Immunogen

A synthetic peptide specific to human Protein Cripto was used as the immunogen for the recombinant CRIPTO antibody.

Storage

Store the recombinant CRIPTO antibody at -20oC.