

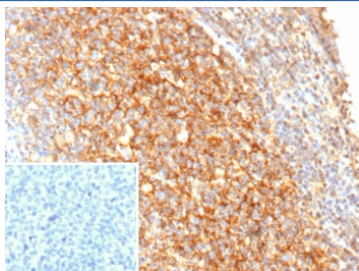
Recombinant CR2 Antibody / Complement receptor 2 / CD21 [clone rCR2/9537] (V5514)

Catalog No.	Formulation	Size
V5514-100UG	0.2 mg/ml in 1X PBS with 0.1 mg/ml BSA (US sourced), 0.05% sodium azide	100 ug
V5514-20UG	0.2 mg/ml in 1X PBS with 0.1 mg/ml BSA (US sourced), 0.05% sodium azide	20 ug
V5514SAF-100UG	1 mg/ml in 1X PBS; BSA free, sodium azide free	100 ug

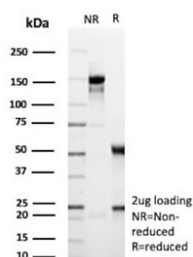
Recombinant MOUSE MONOCLONAL

[Bulk quote request](#)

Availability	1-3 business days
Species Reactivity	Human
Format	Purified
Clonality	Recombinant Mouse Monoclonal
Isotype	Mouse IgG2b, kappa
Clone Name	rCR2/9537
Purity	Protein A/G affinity
UniProt	P20023
Localization	Cell membrane
Applications	Immunohistochemistry (FFPE) : 1-2ug/ml
Limitations	This recombinant CR2 antibody is available for research use only.



IHC staining of FFPE human tonsil tissue with recombinant CR2 antibody (clone rCR2/9537). Inset: PBS used in place of primary Ab (secondary Ab negative control).
 HIER: boil tissue sections in pH 9 10mM Tris with 1mM EDTA for 20 min and allow to cool before testing.



SDS-PAGE analysis of purified, BSA-free recombinant CR2 antibody (clone rCR2/9537) as confirmation of integrity and purity.

Description

Recognizes a protein of 140kDa, which is identified as the complement receptor 2(CR2)/CD21. This protein is expressed strongly on mature B cells, follicular dendritic cells and weakly on immature thymocytes and T lymphocytes. In B-cell ontogeny, CD21 appears after the pre-B-stage, is maintained during peripheral B-cell development and is lost upon terminal differentiation into plasma cells. CD21 expression is also gradually lost after stimulation of B cells in vitro. CD21 functions as receptor for C3d, C3dg and iC3b Complement components, for EBV and for IFN α . CD21 binds to CD23 and associates with CD19, CD81 and Leu13 to form a large signal-transduction complex involved in B cell activation.

Application Notes

Optimal dilution of the recombinant CR2 antibody should be determined by the researcher.

Immunogen

A recombinant fragment (within amino acids 100-300) of human Complement receptor 2/CD21 protein was used as the immunogen for the recombinant CR2 antibody.

Storage

Aliquot the recombinant CR2 antibody and store frozen at -20°C or colder. Avoid repeated freeze-thaw cycles.