

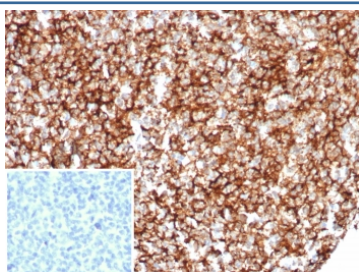
Recombinant CR1 Antibody / CD35 [clone rCR1/8599] (V4797)

| Catalog No. | Formulation | Size |
|----------------|---|--------|
| V4797-100UG | 0.2 mg/ml in 1X PBS with 0.1 mg/ml BSA (US sourced), 0.05% sodium azide | 100 ug |
| V4797-20UG | 0.2 mg/ml in 1X PBS with 0.1 mg/ml BSA (US sourced), 0.05% sodium azide | 20 ug |
| V4797SAF-100UG | 1 mg/ml in 1X PBS; BSA free, sodium azide free | 100 ug |

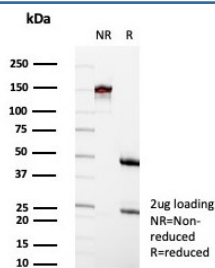
Recombinant **MOUSE MONOCLONAL**

[Bulk quote request](#)

| | |
|---------------------------|---|
| Availability | 1-3 business days |
| Species Reactivity | Human |
| Format | Purified |
| Clonality | Recombinant Mouse Monoclonal |
| Isotype | Mouse IgG1, kappa |
| Clone Name | rCR1/8599 |
| Purity | Protein A/G affinity |
| UniProt | P17927 |
| Localization | Cell surface |
| Applications | Immunohistochemistry (FFPE) : 1-2ug/ml for 30 min at RT |
| Limitations | This recombinant CR1 antibody is available for research use only. |



IHC staining of FFPE human tonsil tissue with recombinant CR1 antibody (clone rCR1/8599). Inset: PBS used in place of primary Ab (secondary Ab negative control).
HIER: boil tissue sections in pH 9 10mM Tris with 1mM EDTA for 20 min and allow to cool before testing.



SDS-PAGE analysis of purified, BSA-free recombinant CR1 antibody (clone rCR1/8599) as confirmation of integrity and purity.

Description

CD35, also called CR1 and complement receptor 1, is a cell membrane-bound, monomeric glycoprotein on numerous cell types including erythrocytes, leukocytes, glomerular podocytes, and follicular dendritic cells. The primary function of CD35 is to serve as the cellular receptor for C3b and C4b, the most important components of the complement system leading to clearance of foreign macromolecules. CD35 antigen is found on erythrocytes, B cells, a subset of T cells, monocytes, as well as eosinophils, and neutrophils. Anti-CD35 is considered a mature B-cell marker which labels follicular dendritic reticulum cells and tumors derived from such cells such as follicular dendritic cell tumor/sarcoma.

Application Notes

Optimal dilution of the recombinant CR1 antibody should be determined by the researcher.

Immunogen

A recombinant partial protein sequence (within amino acids 600-900) from the human protein was used as the immunogen for the recombinant CR1 antibody.

Storage

Aliquot the recombinant CR1 antibody and store frozen at -20°C or colder. Avoid repeated freeze-thaw cycles.