

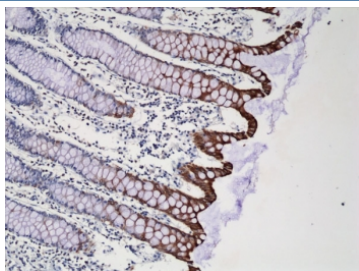
Recombinant CK20 Antibody / Cytokeratin 20 / KRT20 [clone RM283] (R20300)

Catalog No.	Formulation	Size
R20300-0.1ML	Antibody in PBS with 50% glycerol, 1% BSA and 0.09% sodium azide	100 ul

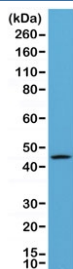
Recombinant **RABBIT MONOCLONAL**

[Bulk quote request](#)

Availability	1-3 business days
Species Reactivity	Human
Format	Purified
Clonality	Recombinant Rabbit Monoclonal
Isotype	Rabbit IgG
Clone Name	RM283
Purity	Protein A purified from animal origin-free supernatant
UniProt	P35900
Gene ID	54474
Localization	Cytoplasmic
Applications	Immunohistochemistry (FFPE) : 1:100-1:250 (1) Western Blot : 1:1000-1:2000
Limitations	This recombinant CK20 antibody is available for research use only.



IHC testing of FFPE human colon tissue with recombinant CK20 antibody at 1:250.



Western blot of human A431 lysate using recombinant CK20 antibody at 1:1000.
Predicted molecular weight ~49 kDa.

Description

This recombinant CK20 antibody reacts to human CK20/Cytokeratin-20/Keratin 20.

Application Notes

The stated application concentrations are suggested starting points. Titration of the recombinant CK20 antibody may be required due to differences in protocols and secondary/substrate sensitivity.

1. A pH6 Citrate buffer or pH9 Tris/EDTA buffer HIER step is recommended for testing of FFPE tissue sections.

Immunogen

A peptide corresponding to the C-terminus of human Cytokeratin 20 was used as the immunogen for this recombinant CK20 antibody.

Storage

Store the recombinant CK20 antibody at -20oC (with glycerol) or aliquot and store at -20oC (without glycerol).