

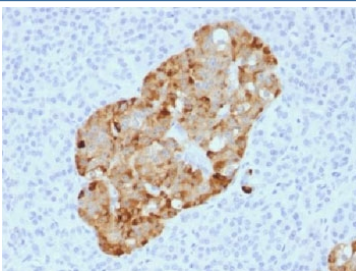
## Recombinant Chromogranin A Antibody [clone CHGA/1731R] (V3824)

Catalog No.	Formulation	Size
V3824-100UG	0.2 mg/ml in 1X PBS with 0.1 mg/ml BSA (US sourced) and 0.05% sodium azide	100 ug
V3824-20UG	0.2 mg/ml in 1X PBS with 0.1 mg/ml BSA (US sourced) and 0.05% sodium azide	20 ug
V3824SAF-100UG	1 mg/ml in 1X PBS; BSA free, sodium azide free	100 ug

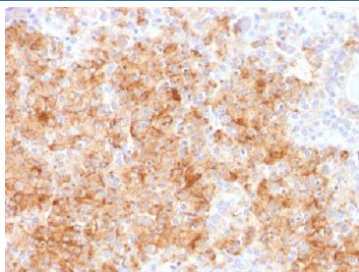
Recombinant **RABBIT MONOCLONAL**

[Bulk quote request](#)

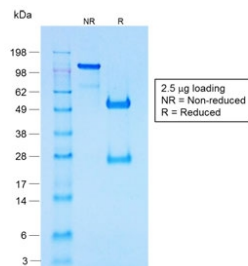
<b>Availability</b>	1-3 business days
<b>Species Reactivity</b>	Human
<b>Format</b>	Purified
<b>Clonality</b>	Recombinant Rabbit Monoclonal
<b>Isotype</b>	Rabbit IgG, kappa
<b>Clone Name</b>	CHGA/1731R
<b>Purity</b>	Protein A affinity chromatography
<b>UniProt</b>	P10645
<b>Localization</b>	Cytoplasmic
<b>Applications</b>	Immunohistochemistry (FFPE) : 0.5-1ug/ml for 30 min at RT
<b>Limitations</b>	This recombinant Chromogranin A antibody is available for research use only.



IHC analysis of FFPE human pancreas stained with recombinant Chromogranin A antibody (CHGA/1731R). Required HIER: steam sections in pH6 citrate buffer for 10-20 min.



IHC analysis of FFPE human parathyroid gland stained with recombinant Chromogranin A antibody (CHGA/1731R). Required HIER: steam sections in pH6 citrate buffer for 10-20 min.



SDS-PAGE analysis of purified, BSA-free recombinant Chromogranin A antibody (clone CHGA/1731R) as confirmation of integrity and purity.

#### Human Protein Microarray Specificity Validation



Analysis of HuProt(TM) microarray containing more than 19,000 full-length human proteins using Chromogranin A antibody (clone CHGA/1731R). These results demonstrate the foremost specificity of the CHGA/1731R mAb. Z- and S- score: The Z-score represents the strength of a signal that an antibody (in combination with a fluorescently-tagged anti-IgG secondary Ab) produces when binding to a particular protein on the HuProt(TM) array. Z-scores are described in units of standard deviations (SD's) above the mean value of all signals generated on that array. If the targets on the HuProt(TM) are arranged in descending order of the Z-score, the S-score is the difference (also in units of SD's) between the Z-scores. The S-score therefore represents the relative target specificity of an Ab to its intended target.

## Description

Chromogranin A is present in neuroendocrine cells throughout the body, including the neuroendocrine cells of the large and small intestine, adrenal medulla and pancreatic islets. It is an excellent marker for carcinoid tumors, pheochromocytomas, paragangliomas, and other neuroendocrine tumors. Co-expression of chromogranin A and neuron specific enolase (NSE) is common in neuroendocrine neoplasms. Reportedly, co-expression of certain keratins and chromogranin indicates neuroendocrine lineage. The presence of strong anti-chromogranin staining and absence of anti-keratin staining should raise the possibility of paraganglioma. The co-expression of chromogranin and NSE is typical of neuroendocrine neoplasms. Most pituitary adenomas and prolactinomas readily express chromogranin.

## Application Notes

Optimal dilution of the recombinant Chromogranin A antibody should be determined by the researcher.

1. The prediluted format is supplied in a dropper bottle and is optimized for use in IHC. After epitope retrieval step (if required), drip mAb solution onto the tissue section and incubate at RT for 30 min.

## Immunogen

Recombinant human protein was used as the immunogen for the recombinant Chromogranin A antibody.

## Storage

Store the recombinant Chromogranin A antibody at 2-8°C (with azide) or aliquot and store at -20°C or colder (without azide).

