

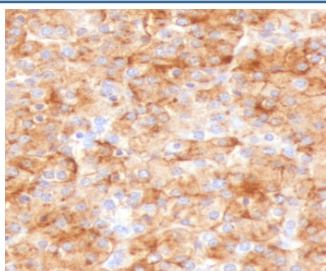
Recombinant Chromogranin A Antibody [clone bGRAN2R] (V3720)

| Catalog No. | Formulation | Size |
|----------------|---|--------|
| V3720-100UG | 0.2 mg/ml in 1X PBS with 0.1 mg/ml BSA (US sourced) and 0.05% sodium azide | 100 ug |
| V3720-20UG | 0.2 mg/ml in 1X PBS with 0.1 mg/ml BSA (US sourced) and 0.05% sodium azide | 20 ug |
| V3720SAF-100UG | 1 mg/ml in 1X PBS; BSA free, sodium azide free | 100 ug |
| V3720IHC-7ML | Prediluted in 1X PBS with 0.1 mg/ml BSA (US sourced) and 0.05% sodium azide; *For IHC use only* | 7 ml |

Recombinant **RABBIT MONOCLONAL**

[Bulk quote request](#)

| | |
|---------------------------|---|
| Availability | 1-3 business days |
| Species Reactivity | Human |
| Format | Purified |
| Clonality | Recombinant Rabbit Monoclonal |
| Isotype | Rabbit IgG, kappa |
| Clone Name | bGRAN2R |
| Purity | Protein A affinity chromatography |
| UniProt | P10645 |
| Localization | Cytoplasmic |
| Applications | Immunohistochemistry (FFPE) : 0.5-1ug/ml for 30 min at RT Prediluted IHC Only Format : incubate for 30 min at RT (1) |
| Limitations | This recombinant Chromogranin A antibody is available for research use only. |



IHC analysis of FFPE human parathyroid gland stained with recombinant Chromogranin A antibody (clone bGRAN2R). Required HIER: steam sections in pH6 citrate buffer for 10-20 min and allow to cool at RT for 20 min before testing.

Description

Chromogranin A or parathyroid secretory protein 1 (gene name CHGA) is a member of the granin family of neuroendocrine secretory proteins, i.e., it is located in secretory vesicles of neurons and endocrine cells such as islet beta cell secretory granules in pancreas. Chromogranin A is the precursor to several functional peptides including vasostatin-1, vasostatin-2, pancreastatin, catestatin and parastatin. These peptides negatively modulate the neuroendocrine function of the releasing cell (autocrine) or nearby cells (paracrine). [Wiki]

Application Notes

The stated application concentrations are suggested starting points. Titration of the recombinant Chromogranin A antibody may be required due to differences in protocols and secondary/substrate sensitivity.

1. The prediluted format is supplied in a dropper bottle and is optimized for use in IHC. After epitope retrieval step (if required), drip mAb solution onto the tissue section and incubate at RT for 30 min.

Immunogen

A recombinant human protein was used as the immunogen for the recombinant Chromogranin A antibody.

Storage

Store the recombinant Chromogranin A antibody at 2-8oC (with azide) or aliquot and store at -20oC or colder (without azide).