

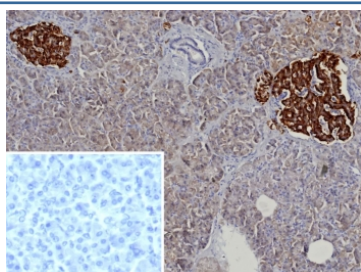
## Recombinant CgA Antibody / Chromogranin A [clone rCHGA/9612] (V5459)

Catalog No.	Formulation	Size
V5459-100UG	0.2 mg/ml in 1X PBS with 0.1 mg/ml BSA (US sourced), 0.05% sodium azide	100 ug
V5459-20UG	0.2 mg/ml in 1X PBS with 0.1 mg/ml BSA (US sourced), 0.05% sodium azide	20 ug
V5459SAF-100UG	1 mg/ml in 1X PBS; BSA free, sodium azide free	100 ug

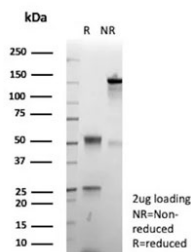
Recombinant **MOUSE MONOCLONAL**

[Bulk quote request](#)

<b>Availability</b>	1-3 business days
<b>Species Reactivity</b>	Human
<b>Format</b>	Purified
<b>Clonality</b>	Recombinant Mouse Monoclonal
<b>Isotype</b>	Mouse IgG2b, kappa
<b>Clone Name</b>	rCHGA/9612
<b>Purity</b>	Protein A/G affinity
<b>UniProt</b>	P10645
<b>Localization</b>	Cytoplasm
<b>Applications</b>	Immunohistochemistry (FFPE) : 1-2ug/ml
<b>Limitations</b>	This recombinant CgA antibody is available for research use only.



IHC staining of FFPE human pancreas tissue with recombinant CgA antibody (clone rCHGA/9612). Inset: PBS used in place of primary Ab (secondary Ab negative control).  
HIER: boil tissue sections in pH 9 10mM Tris with 1mM EDTA for 20 min and allow to cool before testing.



SDS-PAGE analysis of purified, BSA-free recombinant CgA antibody (clone rCHGA/9612) as confirmation of integrity and purity.

## Description

Chromogranin A is present in neuroendocrine cells throughout the body, including the neuroendocrine cells of the large and small intestine, adrenal medulla and pancreatic islets. It is an excellent marker for carcinoid tumors, pheochromocytomas, paragangliomas, and other neuroendocrine tumors. Co-expression of chromogranin A and neuron specific enolase (NSE) is common in neuroendocrine neoplasms. Reportedly, co-expression of certain keratins and chromogranin indicates neuroendocrine lineage. The presence of strong anti-chromogranin staining and absence of anti-keratin staining should raise the possibility of paraganglioma. The co-expression of chromogranin and NSE is typical of neuroendocrine neoplasms. Most pituitary adenomas and prolactinomas readily express chromogranin.

## Application Notes

Optimal dilution of the recombinant CgA antibody should be determined by the researcher.

## Immunogen

Recombinant full-length human Chromogranin A protein was used as the immunogen for the recombinant CgA antibody.

## Storage

Aliquot the recombinant CgA antibody and store frozen at -20oC or colder. Avoid repeated freeze-thaw cycles.