

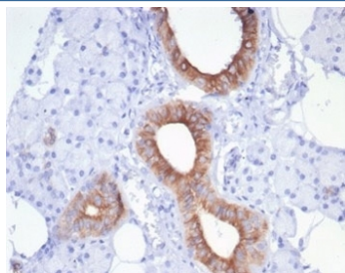
Recombinant CFTR Antibody / Cystic Fibrosis Transmembrane Regulator [clone rCFTR/7175] (V9529)

Catalog No.	Formulation	Size
V9529-100UG	0.2 mg/ml in 1X PBS with 0.1 mg/ml BSA (US sourced), 0.05% sodium azide	100 ug
V9529-20UG	0.2 mg/ml in 1X PBS with 0.1 mg/ml BSA (US sourced), 0.05% sodium azide	20 ug
V9529SAF-100UG	1 mg/ml in 1X PBS; BSA free, sodium azide free	100 ug

Recombinant MOUSE MONOCLONAL

[Bulk quote request](#)

Availability	1-3 business days
Species Reactivity	Human
Format	Purified
Clonality	Recombinant Mouse Monoclonal
Isotype	Mouse IgG1, kappa
Clone Name	rCFTR/7175
Purity	Protein A/G affinity
UniProt	P13569
Localization	Cell surface, Cytoplasm
Applications	Immunohistochemistry (FFPE) : 1-2ug/ml
Limitations	This recombinant CFTR antibody is available for research use only.



IHC staining of FFPE human salivary gland tissue with recombinant CFTR antibody (clone rCFTR/7175) at 2ug/ml. HIER: boil tissue sections in pH 9 10mM Tris with 1mM EDTA for 20 min and allow to cool before testing.

Description

Recognizes a protein of 165-170kDa, identified as cystic fibrosis transmembrane conductance regulator (CFTR). CFTR is composed of two membrane-spanning domains (MSD), two nucleotide-binding domains (NBD), and an R domain. It is structurally similar to multidrug resistance (Mdr1) protein and both are members of the superfamily of ATP-binding

cassette (ABC) transporters, also known as traffic ATPases, which are implicated in the movement of various substrates. The CFTR protein is a small conductance adenosine 3-cyclic monophosphate (cAMP)-activated chloride ion channel found in the apical membranes of epithelia within the pancreas, airway, intestine, bile duct, sweat gland, and male genital ducts. CFTR is a valuable marker of human pancreatic duct cell development and differentiation.

Application Notes

Optimal dilution of the recombinant CFTR antibody should be determined by the researcher.

Immunogen

A portion of amino acids 550-850 was used as the immunogen for the recombinant CFTR antibody.

Storage

Aliquot the recombinant CFTR antibody and store frozen at -20oC or colder. Avoid repeated freeze-thaw cycles.