

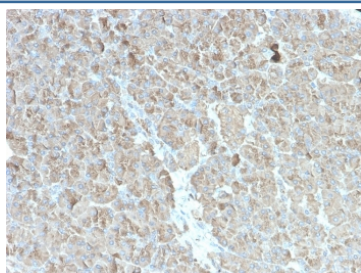
## Recombinant CELA3B Antibody / Elastase 3B [clone rCELA3B/1811] (V7811)

| Catalog No.    | Formulation  | Size   |
|----------------|--|--------|
| V7811-100UG    | 0.2 mg/ml in 1X PBS with 0.1 mg/ml BSA (US sourced) and 0.05% sodium azide | 100 ug |
| V7811-20UG     | 0.2 mg/ml in 1X PBS with 0.1 mg/ml BSA (US sourced) and 0.05% sodium azide | 20 ug  |
| V7811SAF-100UG | 1 mg/ml in 1X PBS; BSA free, sodium azide free                             | 100 ug |

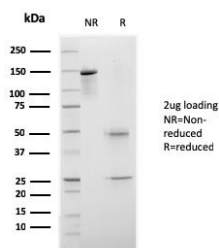
### Recombinant MOUSE MONOCLONAL

[Bulk quote request](#)

|                    |  |
|--------------------|--|
| Availability       | 1-3 business days  |
| Species Reactivity | Human  |
| Format             | Purified   |
| Clonality          | Recombinant Mouse Monoclonal   |
| Isotype            | Mouse IgG1, kappa  |
| Clone Name         | rCELA3B/1811   |
| Purity             | Protein G affinity chromatography                                    |
| UniProt            | P08861   |
| Localization       | Cytoplasmic  |
| Applications       | Immunohistochemistry (FFPE) : 1-2ug/ml                               |
| Limitations        | This recombinant CELA3B antibody is available for research use only. |



IHC testing of human pancreas with recombinant CELA3B antibody (clone rCELA3B/1811). Required HIER: boil tissue sections in 10mM Tris with 1mM EDTA, pH 9, for 10-20 min followed by cooling at RT for 20 min.



SDS-PAGE analysis of purified, BSA-free CELA3B antibody (clone rCELA3B/1811) as confirmation of integrity and purity.

## Description

This MAb recognizes a protein of ~30kDa, identified as CELA3B (Chymotrypsin like elastase family member 3B). Elastases form a subfamily of serine proteases that hydrolyze many proteins in addition to elastin. Humans have six elastase genes which encode the structurally similar proteins elastase 1, 2, 2A, 2B, 3A, and 3B. Unlike other elastases, elastase 3B has little elastolytic activity. Like most of the human elastases, elastase 3B is secreted from the pancreas as a zymogen and, like other serine proteases such as trypsin, chymotrypsin and kallikrein; it has a digestive function in the intestine. Elastase 3B preferentially cleaves proteins after alanine residues. Elastase 3B may also function in the intestinal transport and metabolism of cholesterol. Both elastase 3A and elastase 3B have been referred to as protease E and as elastase 1, and excretion of this protein in fecal material is frequently used as a measure of pancreatic function.

## Application Notes

Optimal dilution of the recombinant CELA3B antibody should be determined by the researcher.

## Immunogen

Amino acids 82-238 from the human protein were used as the immunogen for the recombinant CELA3B antibody.

## Storage

Store the recombinant CELA3B antibody at 2-8°C (with azide) or aliquot and store at -20°C or colder (without azide).