

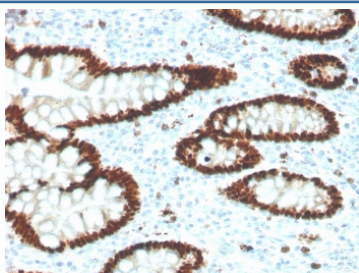
Recombinant CDX2 Antibody [clone CDX2/4394R] (V8630)

Catalog No.	Formulation	Size
V8630-100UG	0.2 mg/ml in 1X PBS with 0.1 mg/ml BSA (US sourced) and 0.05% sodium azide	100 ug
V8630-20UG	0.2 mg/ml in 1X PBS with 0.1 mg/ml BSA (US sourced) and 0.05% sodium azide	20 ug
V8630SAF-100UG	1 mg/ml in 1X PBS; BSA free, sodium azide free	100 ug

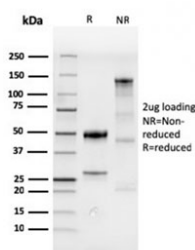
Recombinant **RABBIT MONOCLONAL**

[Bulk quote request](#)

Availability	1-3 business days
Species Reactivity	Human
Format	Purified
Clonality	Recombinant Rabbit Monoclonal
Isotype	Rabbit IgG, kappa
Clone Name	CDX2/4394R
Purity	Protein A affinity chromatography
UniProt	Q99626
Localization	Nuclear
Applications	Immunohistochemistry (FFPE) : 1-2ug/ml for 30 minutes at RT
Limitations	This recombinant CDX2 antibody is available for research use only.



IHC staining of FFPE human colon carcinoma with recombinant CDX2 antibody. HIER: boil tissue sections in pH 9 10mM Tris with 1mM EDTA for 20 min and allow to cool before testing.



SDS-PAGE analysis of purified, BSA-free recombinant CDX2 antibody as confirmation of integrity and purity.

Description

The specificity of this monoclonal antibody to its intended target was validated by HuProt™ Array, containing more than 19,000, full-length human proteins. The intestine-specific transcription factors CDX1 and CDX2 are important for directing intestinal development, differentiation, proliferation and maintenance of the intestinal phenotype. CDX2 protein expression has been seen in GI carcinomas. Anti-CDX2 has been useful to establish GI origin of metastatic adenocarcinomas and carcinoids and is especially useful to distinguish metastatic colorectal adenocarcinoma from lung adenocarcinoma. However, mucinous carcinomas of the ovary also express CDX2 protein. It limits the usefulness of this marker in the distinction of metastatic colorectal adenocarcinoma from mucinous carcinoma of the ovary.

Application Notes

Optimal dilution of the recombinant CDX2 antibody should be determined by the researcher.

Immunogen

A recombinant protein fragment from the human protein was used as the immunogen for the recombinant CDX2 antibody.

Storage

Store the recombinant CDX2 antibody at 2-8°C (with azide) or aliquot and store at -20°C or colder (without azide).