

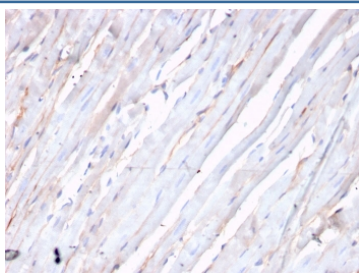
## Recombinant CDH2 Antibody / N-Cadherin / CD325 [clone CDH2/3874R] (V8423)

Catalog No.	Formulation	Size
V8423-100UG	0.2 mg/ml in 1X PBS with 0.1 mg/ml BSA (US sourced) and 0.05% sodium azide	100 ug
V8423-20UG	0.2 mg/ml in 1X PBS with 0.1 mg/ml BSA (US sourced) and 0.05% sodium azide	20 ug
V8423SAF-100UG	1 mg/ml in 1X PBS; BSA free, sodium azide free	100 ug

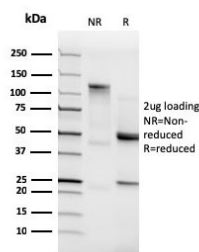
Recombinant **RABBIT MONOCLONAL**

[Bulk quote request](#)

Availability	1-3 business days
Species Reactivity	Human
Format	Purified
Clonality	Recombinant Rabbit Monoclonal
Isotype	Rabbit IgG
Clone Name	CDH2/3874R
Purity	Protein A affinity chromatography
UniProt	P19022
Localization	Cell surface, cytoplasmic
Applications	Immunohistochemistry (FFPE) : 1-2ug/ml for 30 minutes at RT
Limitations	This recombinant CDH2 antibody is available for research use only.



IHC staining of FFPE human heart with recombinant CDH2 antibody. HIER: boil tissue sections in pH 9 10mM Tris with 1mM EDTA for 20 min and allow to cool before testing.



SDS-PAGE analysis of purified, BSA-free recombinant CDH2 antibody as confirmation of integrity and purity.

## Description

Recognizes a protein of ~140kDa, identified as N-Cadherin (NCAD), also known as CD325 and CDH2. NCAD is a member of the Cadherin superfamily, and consists of five extracellular repeats, a transmembrane domain and a cytoplasmic domain. CD325 deficient mice die at day 10 of gestation and embryos display major heart defects and malformed neural tubes and somites. Consistent with this, CD325 has been implicated in several aspects of cardiac development including the precardiac mesoderm, establishment of left-right symmetry and cardiac looping morphogenesis. Furthermore, CD325 is normally involved in inducing cell cycle arrest and its expression is frequently deregulated in cancer cells. Studies have linked N-cadherin to cancer metastasis by showing the aggressive tumor cells had preferentially turned on N-cadherin as opposed to E- or P-cadherin.

## Application Notes

Optimal dilution of the recombinant CDH2 antibody should be determined by the researcher.

## Immunogen

Recombinant full-length human protein was used as the immunogen for the recombinant CDH2 antibody.

## Storage

Store the recombinant CDH2 antibody at 2-8°C (with azide) or aliquot and store at -20°C or colder (without azide).