

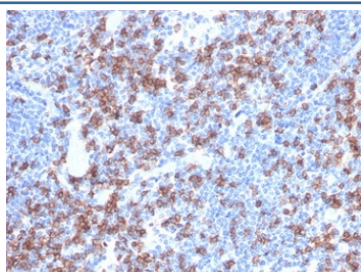
Recombinant CD8A Antibody [clone rCD8/6590] (V9148)

Catalog No.	Formulation	Size
V9148-100UG	0.2 mg/ml in 1X PBS with 0.1 mg/ml BSA (US sourced), 0.05% sodium azide	100 ug
V9148-20UG	0.2 mg/ml in 1X PBS with 0.1 mg/ml BSA (US sourced), 0.05% sodium azide	20 ug
V9148SAF-100UG	1 mg/ml in 1X PBS; BSA free, sodium azide free	100 ug

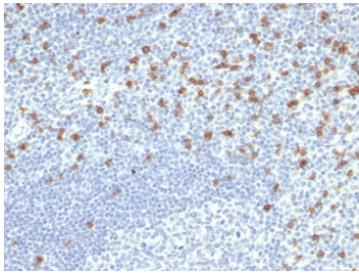
Recombinant **MOUSE MONOCLONAL**

[Bulk quote request](#)

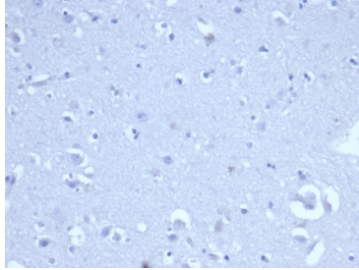
Availability	1-3 business days
Species Reactivity	Human
Format	Purified
Clonality	Recombinant Mouse Monoclonal
Isotype	Mouse IgG1, kappa
Clone Name	rCD8/6590
Purity	Protein A/G affinity
UniProt	P01732
Localization	Cell Surface
Applications	Immunohistochemistry (FFPE) : 1-2ug/ml
Limitations	This recombinant CD8A antibody is available for research use only.



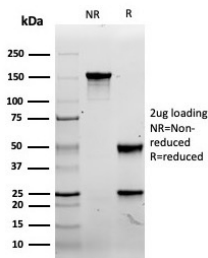
IHC staining of FFPE human lymph node with recombinant CD8A antibody (clone rCD8/6590). HIER: boil tissue sections in pH 9 10mM Tris with 1mM EDTA for 20 min and allow to cool before testing.



IHC staining of FFPE human tonsil tissue with recombinant CD8A antibody (clone rCD8/6590). HIER: boil tissue sections in pH 9 10mM Tris with 1mM EDTA for 20 min and allow to cool before testing.



Negative control: IHC staining of FFPE human brain tissue with recombinant CD8A antibody (clone rCD8/6590) at 2ug/ml in PBS for 30min RT. HIER: boil tissue sections in pH 9 10mM Tris with 1mM EDTA for 20 min and allow to cool before testing.



SDS-PAGE analysis of purified, BSA-free recombinant CD8A antibody (rCD8/6590) as confirmation of integrity and purity.

Description

CD8 is a cell surface receptor expressed either as a heterodimer with the CD8 beta chain (CD8 alpha/beta) or as a homodimer (CD8 alpha/alpha). A majority of thymocytes and a subpopulation of mature T cells and NK cells express CD8a. CD8 binds to MHC class 1 and through its association with protein tyrosine kinase p56lck plays a role in T cell development and activation of mature T cells. For mature T-cells, CD4 and CD8 are mutually exclusive, so anti-CD8, generally used in conjunction with anti-CD4. It is a useful marker for distinguishing helper/inducer T-lymphocytes, and most peripheral T-cell lymphomas are CD4+/CD8-. Anaplastic large cell lymphoma is usually CD4+ and CD8-, and in T-lymphoblastic lymphoma/leukemia, CD4 and CD8 are often co-expressed. CD8 is also found in littoral cell angioma of the spleen.

Application Notes

Optimal dilution of the recombinant CD8A antibody should be determined by the researcher.

Immunogen

A portion of amino acids 135-235 of CD8 alpha protein was used as the immunogen for the recombinant CD8A antibody.

Storage

Aliquot the recombinant CD8A antibody and store frozen at -20oC or colder. Avoid repeated freeze-thaw cycles.

