

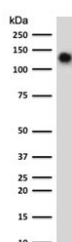
Recombinant CD68 Antibody [clone CDLA68-3R] (V3996)

Catalog No.	Formulation	Size
V3996-100UG	0.2 mg/ml in 1X PBS with 0.1 mg/ml BSA (US sourced) and 0.05% sodium azide	100 ug
V3996-20UG	0.2 mg/ml in 1X PBS with 0.1 mg/ml BSA (US sourced) and 0.05% sodium azide	20 ug
V3996SAF-100UG	1 mg/ml in 1X PBS; BSA free, sodium azide free	100 ug
V3996IHC-7ML	Prediluted in 1X PBS with 0.1 mg/ml BSA (US sourced) and 0.05% sodium azide; *For IHC use only*	7 ml

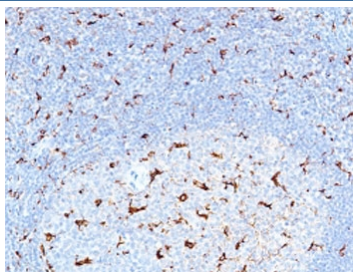
Recombinant **RABBIT MONOCLONAL**

[Bulk quote request](#)

Availability	1-3 business days
Species Reactivity	Human
Format	Purified
Clonality	Recombinant Rabbit Monoclonal
Isotype	Rabbit IgG, kappa
Clone Name	CDLA68-3R
Purity	Protein A affinity chromatography
UniProt	P34810
Localization	Cytoplasmic, membrane
Applications	Western Blot : 1-2ug/ml Immunohistochemistry (FFPE) : 1-2ug/ml for 30 min at RT Prediluted IHC Only Format : incubate for 30 min at RT (1)
Limitations	This recombinant CD68 antibody is available for research use only.



Western blot testing of human spleen lysate with CD68 antibody (clone CDLA68-3R).
Expected molecular weight: 37-110 kDa depending on glycosylation level.



IHC staining of FFPE human tonsil with recombinant CD68 antibody (clone CDLA68-3R). HIER: boil tissue sections in pH6, 10mM citrate buffer, for 10-20 min followed by cooling at RT for 20 min.

Description

CD68 could play a role in phagocytic activities of tissue macrophages, both in intracellular lysosomal metabolism and extracellular cell-cell and cell-pathogen interactions. Binds to tissue- and organ-specific lectins or selectins, allowing homing of macrophage subsets to particular sites. Rapid recirculation of CD68 from endosomes and lysosomes to the plasma membrane may allow macrophages to crawl over selectin-bearing substrates or other cells. [UniProt]

Application Notes

The stated application concentrations are suggested starting points. Titration of the recombinant CD68 antibody may be required due to differences in protocols and secondary/substrate sensitivity.

1. The prediluted format is supplied in a dropper bottle and is optimized for use in IHC. After epitope retrieval step (if required), drip mAb solution onto the tissue section and incubate at RT for 30 min.

Immunogen

Full length recombinant human protein was used as the immunogen for the recombinant CD68 antibody.

Storage

Store the recombinant CD68 antibody at 2-8°C (with azide) or aliquot and store at -20°C or colder (without azide).