

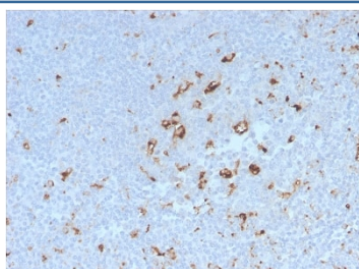
Recombinant CD68 Antibody [clone C68/2908R] (V7391)

Catalog No.	Formulation	Size
V7391-100UG	0.2 mg/ml in 1X PBS with 0.1 mg/ml BSA (US sourced) and 0.05% sodium azide	100 ug
V7391-20UG	0.2 mg/ml in 1X PBS with 0.1 mg/ml BSA (US sourced) and 0.05% sodium azide	20 ug
V7391SAF-100UG	1 mg/ml in 1X PBS; BSA free, sodium azide free	100 ug
V7391IHC-7ML	Prediluted in 1X PBS with 0.1 mg/ml BSA (US sourced) and 0.05% sodium azide; *For IHC use only*	7 ml

Recombinant **RABBIT MONOCLONAL**

[Bulk quote request](#)

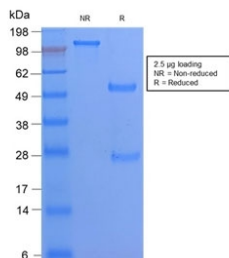
Availability	1-3 business days
Species Reactivity	Human
Format	Purified
Clonality	Recombinant Rabbit Monoclonal
Isotype	Rabbit IgG, kappa
Clone Name	C68/2908R
Purity	Protein A affinity chromatography
UniProt	P34810
Localization	Cytoplasmic, membrane
Applications	Western Blot : 1-2ug/ml Immunohistochemistry (FFPE) : 1-2ug/ml for 30 min at RT
Limitations	This recombinant CD68 antibody is available for research use only.



IHC staining of FFPE human tonsil with recombinant CD68 antibody (clone C68/2908R).
 HIER: boil tissue sections in pH 9 10mM Tris with 1mM EDTA for 10-20 min followed by cooling at RT for 20 min.



Western blot testing of human spleen lysate with CD68 antibody (clone C68/2908R).
Expected molecular weight: 37-110 kDa depending on glycosylation level.



SDS-PAGE analysis of purified, BSA-free recombinant CD68 antibody (clone C68/2908R) as confirmation of integrity and purity.

Description

This antibody recognizes a glycoprotein of 110kDa, which is identified as CD68. It is important for identifying macrophages in tissue sections. It stains macrophages in a wide variety of human tissues, including Kupffer cells and macrophages in the red pulp of the spleen, in lamina propria of the gut, in lung alveoli, and in bone marrow. It reacts with myeloid precursors and peripheral blood granulocytes. It also reacts with plasmacytoid T cells, which are supposed to be of monocyte/macrophage origin. It shows strong granular cytoplasmic staining of chronic and acute myeloid leukemia and also reacts with rare cases of true histiocytic neoplasia. Lymphomas are negative or show few granules.

Application Notes

Optimal dilution of the recombinant CD68 antibody should be determined by the researcher.

1. The prediluted format is supplied in a dropper bottle and is optimized for use in IHC. After epitope retrieval step (if required), drip mAb solution onto the tissue section and incubate at RT for 30 min.

Immunogen

Full length recombinant human protein was used as the immunogen for the recombinant CD68 antibody.

Storage

Store the recombinant CD68 antibody at 2-8°C (with azide) or aliquot and store at -20°C or colder (without azide).