

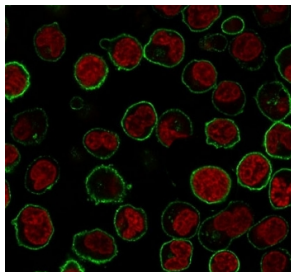
## Recombinant CD45RB Antibody / Rabbit Monoclonal [clone CDLA45RB-2R] (V3771)

| Catalog No.    | Formulation   | Size   |
|----------------|---|--------|
| V3771-100UG    | 0.2 mg/ml in 1X PBS with 0.1 mg/ml BSA (US sourced) and 0.05% sodium azide                      | 100 ug |
| V3771-20UG     | 0.2 mg/ml in 1X PBS with 0.1 mg/ml BSA (US sourced) and 0.05% sodium azide                      | 20 ug  |
| V3771SAF-100UG | 1 mg/ml in 1X PBS; BSA free, sodium azide free  | 100 ug |
| V3771IHC-7ML   | Prediluted in 1X PBS with 0.1 mg/ml BSA (US sourced) and 0.05% sodium azide; *For IHC use only* | 7 ml   |

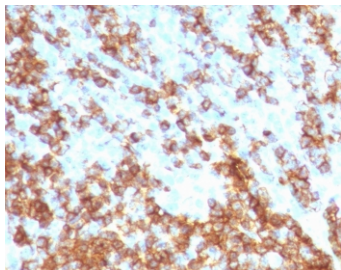
Recombinant RABBIT MONOCLONAL

[Bulk quote request](#)

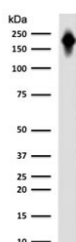
|                    |   |
|--------------------|---|
| Availability       | 1-3 business days   |
| Species Reactivity | Human   |
| Format             | Purified  |
| Clonality          | Recombinant Rabbit Monoclonal   |
| Isotype            | Rabbit IgG, kappa   |
| Clone Name         | CDLA45RB-2R   |
| Purity             | Protein A affinity chromatography   |
| UniProt            | P08575  |
| Localization       | Cell surface and cytoplasmic  |
| Applications       | Flow Cytometry : 1-2ug/10 <sup>6</sup> cells<br>Immunofluorescence : 1-2ug/ml<br>Western Blot : 1-2ug/ml<br>Immunohistochemistry (FFPE) : 0.5-1ug/ml for 30 min at RT<br>Prediluted IHC Only Format : incubate for 30 min at RT (1) |
| Limitations        | This recombinant CD45RB antibody is available for research use only.  |



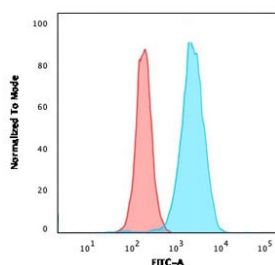
Immunofluorescence staining of PFA-fixed human Raji cells with CD45RB antibody (clone CDLA45RB-2R, green) and Phalloidin (red).



IHC staining of FFPE human tonsil tissue with recombinant CD45RB antibody (clone CDLA45RB-2R). Required HIER: boil tissue sections in 10mM citrate buffer, pH 6, for 10-20 min followed by cooling at RT for 20 min.



Western blot testing of human spleen lysate with CD45RB antibody (clone CDLA45RB-2R). Expected molecular weight: 147-220 kDa depending on glycosylation level.



Flow cytometry testing of PFA-fixed human Raji cells with CD45RB antibody (clone CDLA45RB-2R); Red=isotype control, Blue= CD45RB antibody.

## Description

CD45R, also designated CD45 and PTPRC, has been identified as a transmembrane glycoprotein, broadly expressed among hematopoietic cells. Multiple isoforms of CD45R are distributed throughout the immune system according to cell type. These isoforms arise because of alternative splicing of exons 4, 5, and 6. The corresponding protein domains are characterized by the binding of monoclonal antibodies specific for CD45RA (exon 4), CD45RB (exon 5), CD45RC (exon 6) and CD45RO (exons 4 to 6 spliced out). The variation in these isoforms is localized to the extracellular domain of CD45R, while the intracellular domain is conserved. CD45RB is expressed on mature B-lymphocytes and the majority of lymphomas and leukemias of B-cell origin. This antigen is also expressed on the surface of cells of myeloid lineage.

## Application Notes

The stated application concentrations are suggested starting points. Titration of the recombinant CD45RB antibody may be required due to differences in protocols and secondary/substrate sensitivity.

1. The prediluted format is supplied in a dropper bottle and is optimized for use in IHC. After epitope retrieval step (if required), drip mAb solution onto the tissue section and incubate at RT for 30 min.

## Immunogen

Human B lymphocytes were used as immunogen for this recombinant CD45RB antibody.

## Storage

The recombinant CD45RB antibody (with azide) can be stored at 2-8°C. The azide-free format should be aliquoted and stored at -20°C or colder.