

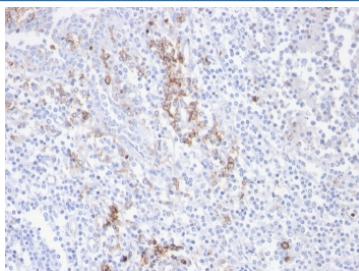
Recombinant CD38 Antibody [clone CD38/4247R] (V8742)

Catalog No.	Formulation	Size
V8742-100UG	0.2 mg/ml in 1X PBS with 0.1 mg/ml BSA (US sourced) and 0.05% sodium azide	100 ug
V8742-20UG	0.2 mg/ml in 1X PBS with 0.1 mg/ml BSA (US sourced) and 0.05% sodium azide	20 ug
V8742SAF-100UG	1 mg/ml in 1X PBS; BSA free, sodium azide free	100 ug

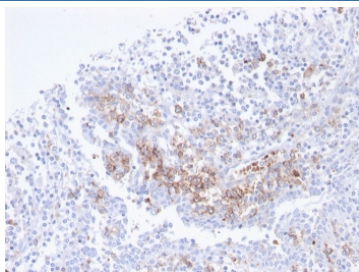
Recombinant **RABBIT MONOCLONAL**

[Bulk quote request](#)

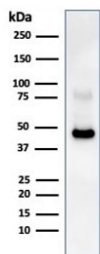
Availability	1-3 business days
Species Reactivity	Human
Format	Purified
Clonality	Recombinant Rabbit Monoclonal
Isotype	Rabbit IgG
Clone Name	CD38/4247R
Purity	Protein A affinity chromatography
UniProt	P28907
Localization	Cell surface, cytoplasm and nucleus
Applications	Western Blot : 2-4ug/ml Immunohistochemistry (FFPE) : 1-2ug/ml for 30 minutes at RT
Limitations	This recombinant CD38 antibody is available for research use only.



IHC staining of FFPE human tonsil with recombinant CD38 antibody. HIER: boil tissue sections in pH 9 10mM Tris with 1mM EDTA for 20 min and allow to cool before testing.



IHC staining of FFPE human tonsil with recombinant CD38 antibody. HIER: boil tissue sections in pH 9 10mM Tris with 1mM EDTA for 20 min and allow to cool before testing.



Western blot testing of human Raji cell lysate with recombinant CD38 antibody. Expected molecular weight: 34-46 kDa.

Description

CD38 is a type II transmembrane glycoprotein that is present on early B- and T-cell lineages and activated B- and T-cells but is absent from most mature resting peripheral lymphocytes. CD38 is found on thymocytes, pre-B cells, germinal center B-cells, mitogen-activated T-cells, monocytes and Ig-secreting plasma cells. CD38 is expressed on CD34+ cells. The CD34+CD38- population of hematopoietic stems cells define the most pluripotent cells (e.g. blast colony forming cells).

Application Notes

Optimal dilution of the recombinant CD38 antibody should be determined by the researcher.

Immunogen

A portion of amino acids 200-300 from the human protein was used as the immunogen for the recombinant CD38 antibody.

Storage

Store the recombinant CD38 antibody at 2-8°C (with azide) or aliquot and store at -20°C or colder (without azide).