

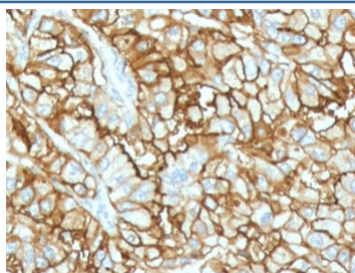
Recombinant CD34 Antibody [clone CDLA34-2R] (V7456)

Catalog No.	Formulation	Size
V7456-100UG	0.2 mg/ml in 1X PBS with 0.1 mg/ml BSA (US sourced) and 0.05% sodium azide	100 ug
V7456-20UG	0.2 mg/ml in 1X PBS with 0.1 mg/ml BSA (US sourced) and 0.05% sodium azide	20 ug
V7456SAF-100UG	1 mg/ml in 1X PBS; BSA free, sodium azide free	100 ug
V7456IHC-7ML	Prediluted in 1X PBS with 0.1 mg/ml BSA (US sourced) and 0.05% sodium azide; *For IHC use only*	7 ml

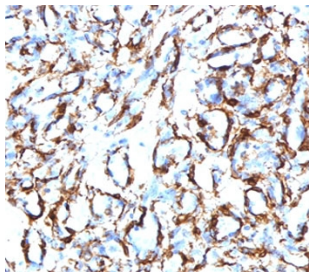
Recombinant **RABBIT MONOCLONAL**

[Bulk quote request](#)

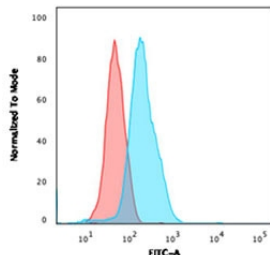
Availability	1-3 business days
Species Reactivity	Human
Format	Purified
Clonality	Recombinant Rabbit Monoclonal
Isotype	Rabbit IgG, kappa
Clone Name	CDLA34-2R
Purity	Protein A affinity chromatography
UniProt	P28906
Localization	Cell surface, cytoplasmic
Applications	Flow Cytometry : 0.5-1ug/10 ⁶ cells Immunohistochemistry (FFPE) : 1-2ug/ml for 30 min at RT Prediluted IHC Only Format : incubate for 30 min at RT (1)
Limitations	This recombinant CD34 antibody is available for research use only.



IHC testing of FFPE human renal cell carcinoma with recombinant CD34 antibody (clone CDLA34-2R). Required HIER: boil tissue sections in 10mM Tris with 1mM EDTA, pH 9, for 10-20 min followed by cooling at RT for 20 min.



IHC testing of FFPE human angiosarcoma with recombinant CD34 antibody (clone CDLA34-2R). Required HIER: boil tissue sections in 10mM Tris with 1mM EDTA, pH 9, for 10-20 min followed by cooling at RT for 20 min.



Flow cytometry testing of human Jurkat cells with CD34 antibody (clone CDLA34-2R); Red=isotype control, Blue= CD34 antibody.

Description

This antibody recognizes a transmembrane, heavily glycosylated protein of 90-120kDa, which is identified as CD34. Its expression is a hallmark for identifying pluripotent hematopoietic stem or progenitor cells. Its expression is gradually lost as lineage committed progenitors differentiate. CD34 is a marker of choice for staining blasts in acute myeloid leukemia. In addition, it is expressed by soft tissue tumors, such as solitary fibrous tumor and gastrointestinal stromal tumor. CD34 expression is also found in vascular endothelium. Additionally, proliferating endothelial cells overexpress this molecule than the non-proliferating endothelial cells. Anti-CD34 labels >85% of angiosarcoma and Kaposi's sarcoma, but shows low specificity.

Application Notes

Optimal dilution of the recombinant CD34 antibody should be determined by the researcher.

1. The prediluted format is supplied in a dropper bottle and is optimized for use in IHC. After epitope retrieval step (if required), drip mAb solution onto the tissue section and incubate at RT for 30 min.

Immunogen

Recombinant full-length human protein was used as the immunogen for the recombinant CD34 antibody.

Storage

Store the recombinant CD34 antibody at 2-8°C (with azide) or aliquot and store at -20°C or colder (without azide).