

Recombinant CD31 Antibody / Rabbit Monoclonal [clone RMCD31-1] (V7214)

Catalog No.	Formulation	Size
V7214-100UG	0.2 mg/ml in 1X PBS with 0.1 mg/ml BSA (US sourced) and 0.05% sodium azide	100 ug
V7214-20UG	0.2 mg/ml in 1X PBS with 0.1 mg/ml BSA (US sourced) and 0.05% sodium azide	20 ug
V7214SAF-100UG	1 mg/ml in 1X PBS; BSA free, sodium azide free	100 ug
V7214IHC-7ML	Prediluted in 1X PBS with 0.1 mg/ml BSA (US sourced) and 0.05% sodium azide; *For IHC use only*	7 ml

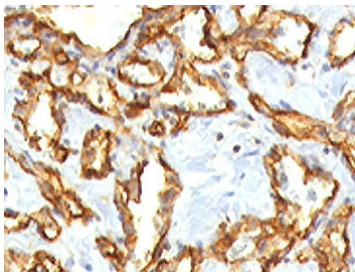
Recombinant RABBIT MONOCLONAL

[Bulk quote request](#)

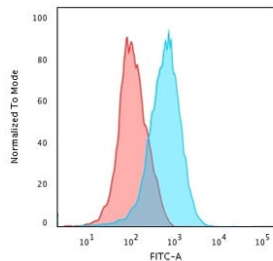
Species Reactivity	Human
Format	Purified
Clonality	Recombinant Rabbit Monoclonal
Isotype	Rabbit IgG, kappa
Clone Name	RMCD31-1
Purity	Protein A affinity
Gene ID	5175
Localization	Cell surface and cytoplasmic
Applications	Western Blot : 1-2ug/ml Flow Cytometry : 1-2ug/10 ⁶ cells Immunohistochemistry (FFPE) : 1-2ug/ml for 30 min at RT Prediluted IHC Only Format : incubate for 30 min at RT (1)
Limitations	This recombinant CD31 antibody is available for research use only.



Western blot testing of human ThP1 cell lysate with recombinant CD31 antibody (clone RMCD31-1). Expected molecular weight: 83-130 kDa depending on level of glycosylation.



IHC staining of FFPE human angiocarcinoma with recombinant CD31 antibody (clone RMCD31-1). HIER: steam sections in 1mM EDTA, pH 9, for 10-20 min.



Flow cytometry testing of PFA-fixed human Jurkat cells with recombinant CD31 antibody (clone RMCD31-1); Red=isotype control, Blue= recombinant CD31 antibody.

Description

CD31 is found on the surface of platelets, monocytes, neutrophils, and some types of T-cells, and makes up a large portion of endothelial cell intercellular junctions. It is a member of the immunoglobulin superfamily and is likely involved in leukocyte migration, angiogenesis, and integrin activation. [RefSeq]

Application Notes

Titration of the recombinant CD31 antibody may be required for optimal performance.

1. The prediluted format is supplied in a dropper bottle and is optimized for use in IHC. After epitope retrieval step (if required), drip mAb solution onto the tissue section and incubate at RT for 30 min.

Immunogen

A full length recombinant human protein was used as the immunogen for the recombinant CD31 antibody.

Storage

Store the recombinant CD31 antibody at 2-8°C (with azide) or aliquot and store at -20°C or colder (without azide).