

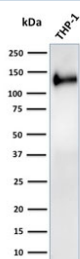
Recombinant CD31 Antibody / PECAM-1 [clone C31/2876R] (V7514)

Catalog No.	Formulation	Size
V7514-100UG	0.2 mg/ml in 1X PBS with 0.1 mg/ml BSA (US sourced) and 0.05% sodium azide	100 ug
V7514-20UG	0.2 mg/ml in 1X PBS with 0.1 mg/ml BSA (US sourced) and 0.05% sodium azide	20 ug
V7514SAF-100UG	1 mg/ml in 1X PBS; BSA free, sodium azide free	100 ug
V7514IHC-7ML	Prediluted in 1X PBS with 0.1 mg/ml BSA (US sourced) and 0.05% sodium azide; *For IHC use only*	7 ml

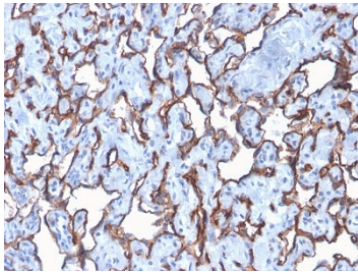
Recombinant **RABBIT MONOCLONAL**

[Bulk quote request](#)

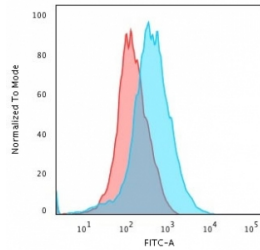
Availability	1-3 business days
Species Reactivity	Human
Format	Purified
Clonality	Recombinant Rabbit Monoclonal
Isotype	Rabbit IgG, kappa
Clone Name	C31/2876R
Purity	Protein A affinity
UniProt	P16284
Localization	Cell surface and cytoplasmic
Applications	Western Blot : 1-2ug/ml Flow Cytometry : 1-2ug/10 ⁶ cells Immunohistochemistry (FFPE) : 1-2ug/ml for 30 min at RT
Limitations	This recombinant CD31 antibody is available for research use only.



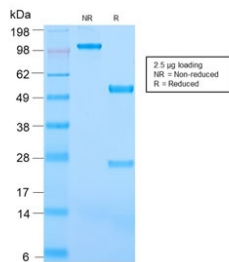
Western blot testing of human ThP-1 cell lysate with recombinant CD31 antibody. Expected molecular weight: 83-130 kDa depending on level of glycosylation.



IHC staining of FFPE human angiocarcinoma with recombinant CD31 antibody (clone C31/2876R). Required HIER: boil tissue sections in 10mM Tris with 1mM EDTA, pH9, for 10-20 min followed by cooling at RT for 20 min.



Flow cytometry staining of fixed and permeabilized human Jukat cells with recombinant CD31 antibody; Red=isotype control, Blue= recombinant CD31 antibody.



SDS-PAGE analysis of purified, BSA-free recombinant CD31 antibody (clone C31/2876R) as confirmation of integrity and purity.

Description

CD31 is found on the surface of platelets, monocytes, neutrophils, and some types of T-cells, and makes up a large portion of endothelial cell intercellular junctions. It is a member of the immunoglobulin superfamily and is likely involved in leukocyte migration, angiogenesis, and integrin activation. [RefSeq]

Application Notes

Titering of the recombinant CD31 antibody may be required for optimal performance.

1. The prediluted format is supplied in a dropper bottle and is optimized for use in IHC. After epitope retrieval step (if required), drip mAb solution onto the tissue section and incubate at RT for 30 min.

Immunogen

Full length recombinant human protein was used as the immunogen for the recombinant CD31 antibody.

Storage

Store the recombinant CD31 antibody at 2-8°C (with azide) or aliquot and store at -20°C or colder (without azide).

