

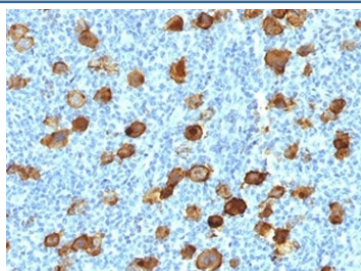
## Recombinant CD30 Antibody [clone Ki-1/4399R] (V8727)

Catalog No.	Formulation	Size
V8727-100UG	0.2 mg/ml in 1X PBS with 0.1 mg/ml BSA (US sourced) and 0.05% sodium azide	100 ug
V8727-20UG	0.2 mg/ml in 1X PBS with 0.1 mg/ml BSA (US sourced) and 0.05% sodium azide	20 ug
V8727SAF-100UG	1 mg/ml in 1X PBS; BSA free, sodium azide free	100 ug

Recombinant **RABBIT MONOCLONAL**

[Bulk quote request](#)

Availability	1-3 business days
Species Reactivity	Human
Format	Purified
Clonality	Recombinant Rabbit Monoclonal
Isotype	Rabbit IgG, kappa
Clone Name	Ki-1/4399R
Purity	Protein A affinity chromatography
UniProt	P28908
Localization	Cell surface, cytoplasmic
Applications	Immunohistochemistry (FFPE) : 1-2ug/ml for 30 minutes at RT
Limitations	This recombinant CD30 antibody is available for research use only.



IHC testing of FFPE Hodgkin's lymphoma stained with recombinant CD30 antibody (clone Ki-1/4399R). Required HIER: steam sections in pH9, 1mM EDTA for 10-20 min.

## Description

Recognizes a single chain glycoprotein of 105/120kDa, identified as CD30/Ki-1. CD30 is synthesized as a 90kDa precursor, which is processed in the Golgi complex into a membrane-bound phosphorylated mature 105/120kDa

glycoprotein. In Hodgkin's disease, CD30/Ki-1 antigen is expressed by mononuclear-Hodgkin and multinucleated Reed-Sternberg cells. It is also expressed by the tumor cells of a majority of anaplastic large cell lymphomas as well as by a varying proportion of activated T and B cells. This MAb distinguishes large cell lymphomas derived from activated lymphoid cells from histiocytic malignancies and lymphomas derived from resting and precursor lymphoid cells or from anaplastic carcinomas. About one third of the Ki-1 positive lymphomas lack the leukocyte common antigen (CD45).

## **Application Notes**

Optimal dilution of the recombinant CD30 antibody should be determined by the researcher.

## **Immunogen**

Recombinant human full-length protein was used as the immunogen for the recombinant CD30 antibody.

## **Storage**

Store the recombinant CD30 antibody at 2-8°C (with azide) or aliquot and store at -20°C or colder (without azide).