

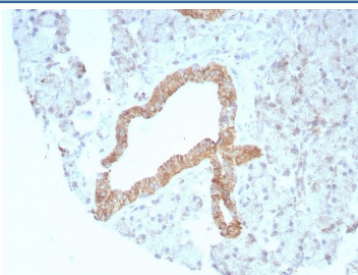
## Recombinant CD269 Antibody / BCMA / TNFRSF17 [clone rCD269/8507] (V4411)

Catalog No.	Formulation	Size
V4411-100UG	0.2 mg/ml in 1X PBS with 0.1 mg/ml BSA (US sourced), 0.05% sodium azide	100 ug
V4411-20UG	0.2 mg/ml in 1X PBS with 0.1 mg/ml BSA (US sourced), 0.05% sodium azide	20 ug
V4411SAF-100UG	1 mg/ml in 1X PBS; BSA free, sodium azide free	100 ug

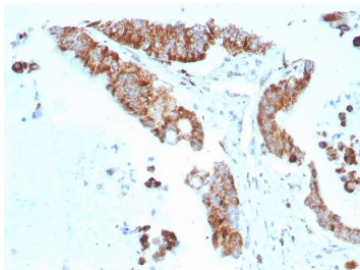
### Recombinant MOUSE MONOCLONAL

[Bulk quote request](#)

<b>Availability</b>	1-3 business days
<b>Species Reactivity</b>	Human
<b>Format</b>	Purified
<b>Clonality</b>	Recombinant Mouse Monoclonal
<b>Isotype</b>	Mouse IgG1, kappa
<b>Clone Name</b>	rCD269/8507
<b>Purity</b>	Protein A/G affinity
<b>UniProt</b>	Q02223
<b>Localization</b>	Cell surface
<b>Applications</b>	ELISA (Order BSA-free Format For Coating) : Immunohistochemistry (FFPE) : 1-2ug/ml for 30 minutes at RT
<b>Limitations</b>	This recombinant CD269 antibody is available for research use only.



IHC staining of FFPE human prostate tissue with recombinant CD269 antibody (clone rCD269/8507). HIER: boil tissue sections in pH 9 10mM Tris with 1mM EDTA for 20 min and allow to cool before testing.



IHC staining of FFPE human colon carcinoma tissue with recombinant CD269 antibody (clone rCD269/8507). HIER: boil tissue sections in pH 9 10mM Tris with 1mM EDTA for 20 min and allow to cool before testing.

## Description

The B cell maturation protein (BCMA) is a type I integral membrane protein that belongs to the tumor necrosis factor receptor (TNF-R) superfamily. It is expressed as a 184 amino acid peptide that is expressed only in mature B-lymphocytes and is located on the cis part of the Golgi apparatus. BCMA shares significant homology with TACI (transmembrane activator) within the cysteine-rich domain. TACI has been shown to bind CAML, which induces activation of NFAT (nuclear factor of activated T cells). Both BCMA and TACI have been shown to bind APRIL and TALL-1, which stimulate B cell proliferation in conjunction with other B-cell activators. When overexpressed, TALL-1 stimulates the development of systemic lupus erythaematosus (SLE).

## Application Notes

Optimal dilution of the recombinant CD269 antibody should be determined by the researcher.

## Immunogen

A recombinant human protein fragment (within amino acids 1-184) was used as the immunogen for the recombinant CD269 antibody.

## Storage

Aliquot the recombinant CD269 antibody and store frozen at -20oC or colder. Avoid repeated freeze-thaw cycles.