

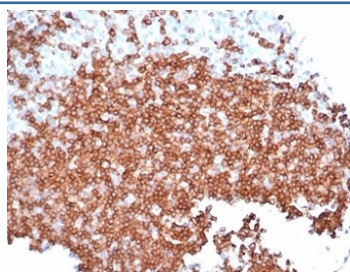
Recombinant CD22 Antibody [clone rBLCAM/6749] (V9458)

Catalog No.	Formulation	Size
V9458-100UG	0.2 mg/ml in 1X PBS with 0.1 mg/ml BSA (US sourced), 0.05% sodium azide	100 ug
V9458-20UG	0.2 mg/ml in 1X PBS with 0.1 mg/ml BSA (US sourced), 0.05% sodium azide	20 ug
V9458SAF-100UG	1 mg/ml in 1X PBS; BSA free, sodium azide free	100 ug

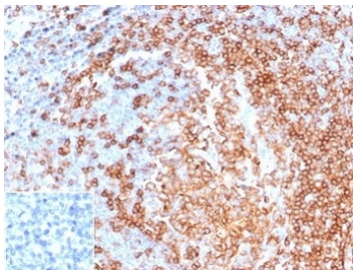
Recombinant **MOUSE MONOCLONAL**

[Bulk quote request](#)

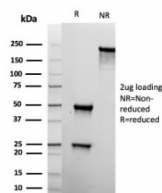
Availability	1-3 business days
Species Reactivity	Human
Format	Purified
Clonality	Recombinant Mouse Monoclonal
Isotype	Mouse IgG1, kappa
Clone Name	rBLCAM/6749
Purity	Protein A/G affinity
UniProt	P20273
Localization	Cell Surface
Applications	Immunohistochemistry (FFPE) : 1-2ug/ml
Limitations	This recombinant CD22 antibody is available for research use only.



IHC staining of FFPE human tonsil tissue with recombinant CD22 antibody (clone rBLCAM/6749). HIER: boil tissue sections in pH 9 10mM Tris with 1mM EDTA for 20 min and allow to cool before testing.



IHC staining of FFPE human tonsil tissue with recombinant CD22 antibody (clone rBLCAM/6749) at 2ug/ml. Negative control inset: PBS instead of primary antibody to control for secondary binding. HIER: boil tissue sections in pH 9 10mM Tris with 1mM EDTA for 20 min and allow to cool before testing.



SDS-PAGE analysis of purified, BSA-free recombinant CD22 antibody (clone rBLCAM/6749) as confirmation of integrity and purity.

Description

CD22 is a member of the immunoglobulin superfamily and serves as an adhesion receptor for sialic acid-bearing ligands expressed on erythrocytes and all leukocyte classes.

Application Notes

Optimal dilution of the recombinant CD22 antibody should be determined by the researcher.

Immunogen

A portion of amino acids 52-178 was used as the immunogen for the recombinant CD22 antibody.

Storage

Aliquot the recombinant CD22 antibody and store frozen at -20oC or colder. Avoid repeated freeze-thaw cycles.