

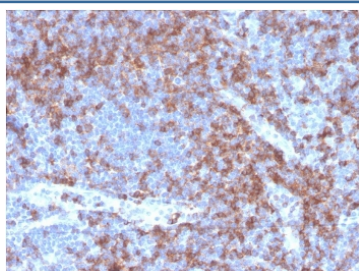
Recombinant CD22 Antibody / BL-CAM [clone BLCAM/2637R] (V8594)

Catalog No.	Formulation	Size
V8594-100UG	0.2 mg/ml in 1X PBS with 0.1 mg/ml BSA (US sourced) and 0.05% sodium azide	100 ug
V8594-20UG	0.2 mg/ml in 1X PBS with 0.1 mg/ml BSA (US sourced) and 0.05% sodium azide	20 ug
V8594SAF-100UG	1 mg/ml in 1X PBS; BSA free, sodium azide free	100 ug

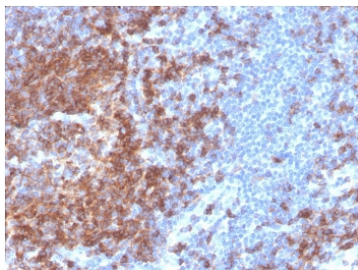
Recombinant **RABBIT MONOCLONAL**

[Bulk quote request](#)

Availability	1-3 business days
Species Reactivity	Human
Format	Purified
Clonality	Recombinant Rabbit Monoclonal
Isotype	Rabbit IgG
Clone Name	BLCAM/2637R
Purity	Protein A affinity chromatography
UniProt	P20273
Localization	Cell surface
Applications	Immunohistochemistry (FFPE) : 1-2ug/ml for 30 minutes at RT
Limitations	This recombinant CD22 antibody is available for research use only.



IHC staining of FFPE human tonsil with recombinant CD22 antibody (clone BLCAM/2637R). HIER: boil tissue sections in pH 9 10mM Tris with 1mM EDTA for 20 min and allow to cool before testing.



IHC staining of FFPE human spleen with recombinant CD22 antibody (clone BLCAM/2637R). HIER: boil tissue sections in pH 9 10mM Tris with 1mM EDTA for 20 min and allow to cool before testing.

Description

Recognizes a protein of 130-140kDa, identified as CD22 (also known as BL-CAM). CD22 expression is restricted to normal and neoplastic B cells and is absent from other haemopoietic cell types. In B-cell ontogeny, CD22 is first expressed in the cytoplasm of pro-B and pre-B cells, and on the surface as B cells mature to become IgD+. It is not expressed by plasma cells, CD22 is found highly expressed in follicular mantle and marginal zone B-cells, and while germinal center B-cells are relatively weak. CD22 is a member of the immunoglobulin superfamily and serves as an adhesion receptor for sialic acid-bearing ligands expressed on erythrocytes and all leukocyte classes. It also associates with tyrosine kinases and play a role in signal transduction and B-cell activation.

Application Notes

Optimal dilution of the recombinant CD22 antibody should be determined by the researcher.

Immunogen

A portion of amino acids 52-178 from the human protein was used as the immunogen for the recombinant CD22 antibody.

Storage

Store the recombinant CD22 antibody at 2-8oC (with azide) or aliquot and store at -20oC or colder (without azide).