

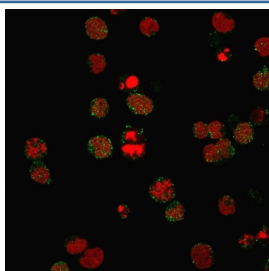
Recombinant CD21 Antibody [clone CR2/3124R] (V7754)

| Catalog No. | Formulation | Size |
|----------------|--|--------|
| V7754-100UG | 0.2 mg/ml in 1X PBS with 0.1 mg/ml BSA (US sourced) and 0.05% sodium azide | 100 ug |
| V7754-20UG | 0.2 mg/ml in 1X PBS with 0.1 mg/ml BSA (US sourced) and 0.05% sodium azide | 20 ug |
| V7754SAF-100UG | 1 mg/ml in 1X PBS; BSA free, sodium azide free | 100 ug |

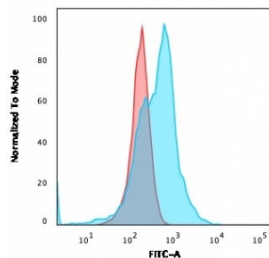
Recombinant **RABBIT MONOCLONAL**

[Bulk quote request](#)

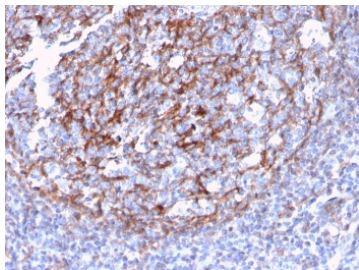
| | |
|---------------------------|---|
| Availability | 1-3 business days |
| Species Reactivity | Human |
| Format | Purified |
| Clonality | Recombinant Rabbit Monoclonal |
| Isotype | Rabbit IgG |
| Clone Name | CR2/3124R |
| Purity | Protein A affinity chromatography |
| UniProt | P20023 |
| Localization | Cell surface |
| Applications | Flow Cytometry : 1-2ug/10 ⁶ cells in 0.1ml Immunofluorescence : 1-2ug/ml Western Blot : 1-2ug/ml Immunohistochemistry (FFPE) : 1-2ug/ml |
| Limitations | This recombinant CD21 antibody is available for research use only. |



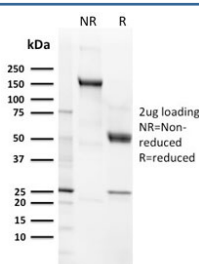
Immunofluorescent staining of PFA-fixed human MOLT4 cells with recombinant CD21 antibody (clone CR2/3124R, green) and Reddot nuclear stain (red).



Flow cytometry testing of PFA-fixed human MOLT4 cells with recombinant CD21 antibody (clone CR2/3124R); Red=isotype control, Blue= recombinant CD21 antibody.



IHC staining of FFPE human tonsil with recombinant CD21 antibody (clone CR2/3124R).
HIER: boil tissue sections in pH 9 10mM Tris with 1mM EDTA for 10-20 min and allow to cool before testing.



SDS-PAGE analysis of purified, BSA-free recombinant CD21 antibody (clone CR2/3124R) as confirmation of integrity and purity.

Description

Recognizes a protein of 140kDa, which is identified as the complement receptor 2 (CR2) or CD21. This protein is expressed strongly on mature B cells, follicular dendritic cells and weakly on immature thymocytes and T lymphocytes. In B-cell ontogeny, CD21 appears after the pre-B-stage, is maintained during peripheral B-cell development and is lost upon terminal differentiation into plasma cells. CD21 expression is also gradually lost after stimulation of B cells in vitro. CD21 functions as receptor for C3d, C3dg and iC3b Complement components, for EBV and for IFN α . CD21 binds to CD23 and associates with CD19, CD81 and Leu13 to form a large signal-transduction complex involved in B cell activation.

Application Notes

Optimal dilution of the recombinant CD21 antibody should be determined by the researcher.

Immunogen

A partial protein corresponding to amino acids 142-240 was used as the immunogen for the recombinant CD21 antibody.

Storage

Store the recombinant CD21 antibody at 2-8°C (with azide) or aliquot and store at -20°C or colder (without azide).

