

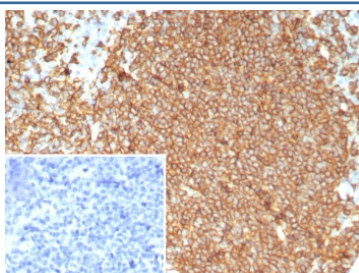
Recombinant CD20 Antibody [clone MS4A1/8072R] (V4169)

Catalog No.	Formulation	Size
V4169-100UG	0.2 mg/ml in 1X PBS with 0.1 mg/ml BSA (US sourced), 0.05% sodium azide	100 ug
V4169-20UG	0.2 mg/ml in 1X PBS with 0.1 mg/ml BSA (US sourced), 0.05% sodium azide	20 ug
V4169SAF-100UG	1 mg/ml in 1X PBS; BSA free, sodium azide free	100 ug

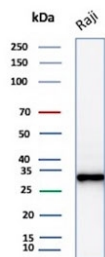
Recombinant **RABBIT MONOCLONAL**

[Bulk quote request](#)

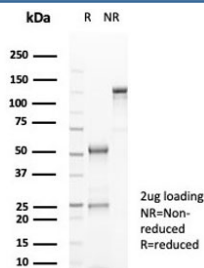
Availability	1-3 business days
Species Reactivity	Human
Format	Purified
Clonality	Recombinant Rabbit Monoclonal
Isotype	Rabbit IgG, kappa
Clone Name	MS4A1/8072R
Purity	Protein A affinity
UniProt	P11836
Localization	Cell Surface
Applications	Western Blot : 2-4ug/ml Immunohistochemistry (FFPE) : 1-2ug/ml for 30 min at RT
Limitations	This recombinant CD20 antibody is available for research use only.



IHC staining of FFPE human tonsil tissue with recombinant CD20 antibody (clone MS4A1/8072R). Inset: PBS used in place of primary Ab (secondary Ab negative control).
HIER: boil tissue sections in pH 9 10mM Tris with 1mM EDTA for 20 min and allow to cool before testing.



Western blot testing of human Raji cell lysate with recombinant CD20 antibody (clone MS4A1/8072R). Predicted molecular weight ~33 kDa.



SDS-PAGE analysis of purified, BSA-free recombinant CD20 antibody (clone MS4A1/8072R) as confirmation of integrity and purity.



Western blot testing of human Raji cell lysate with recombinant CD20 antibody (clone MS4A1/8072R). Predicted molecular weight ~33 kDa.

Description

Recognizes a protein of 30-33kDa, which is identified as CD20. It is a non-Ig differentiation antigen of B-cells and its expression is restricted to normal and neoplastic B-cells, being absent from all other leukocytes and tissues. CD20 is expressed by pre B-cells and persists during all stages of B-cell maturation but is lost upon terminal differentiation into plasma cells. This mAb can be used for immunophenotyping of leukemia and malignant cells, B lymphocyte detection in peripheral blood and B cell localization in tissues. It reacts with the majority of B-cells present in peripheral blood and lymphoid tissues and their derived lymphomas. In lymphoid tissue, germinal center blasts and B-immunoblasts are particularly reactive. It is a reliable antibody for ascribing a B-cell phenotype in known lymphoid tissues. Rarely, CD20-positive T-cell lymphomas have been reported. Reactivity has also been noted with Reed-Sternberg cells in cases of Hodgkin s disease, particularly of lymphocyte predominant type.

Application Notes

Optimal dilution of the recombinant CD20 antibody should be determined by the researcher.

Immunogen

A recombinant partial protein (within amino acids 200-297) from the human protein was used as the immunogen for the recombinant CD20 antibody.

Storage

Aliquot the recombinant CD20 antibody and store frozen at -20oC or colder. Avoid repeated freeze-thaw cycles.

