

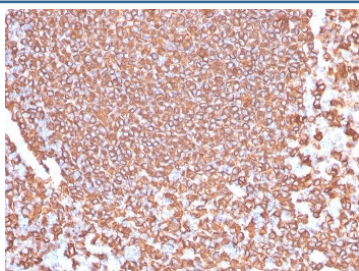
Recombinant CD20 Antibody [clone IGEL/4524R] (V8756)

Catalog No.	Formulation	Size
V8756-100UG	0.2 mg/ml in 1X PBS with 0.1 mg/ml BSA (US sourced) and 0.05% sodium azide	100 ug
V8756-20UG	0.2 mg/ml in 1X PBS with 0.1 mg/ml BSA (US sourced) and 0.05% sodium azide	20 ug
V8756SAF-100UG	1 mg/ml in 1X PBS; BSA free, sodium azide free	100 ug

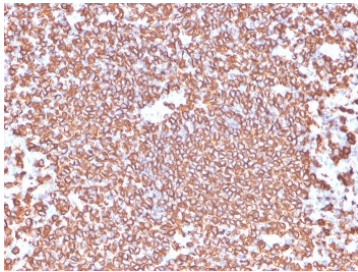
Recombinant **RABBIT MONOCLONAL**

[Bulk quote request](#)

Availability	1-3 business days
Species Reactivity	Human
Format	Purified
Clonality	Recombinant Rabbit Monoclonal
Isotype	Rabbit IgG
Clone Name	IGEL/4524R
Purity	Protein A affinity chromatography
UniProt	P11836
Localization	Cell surface
Applications	Immunohistochemistry (FFPE) : 1-2ug/ml for 30 minutes at RT
Limitations	This recombinant CD20 antibody is available for research use only.



IHC testing of FFPE human tonsil tissue with recombinant CD20 antibody (clone IGEL/4524R). HIER: boil tissue sections in pH6, 10mM citrate buffer, for 20 min and allow to cool before testing.



IHC testing of FFPE human tonsil tissue with recombinant CD20 antibody (clone IGEL/4524R). HIER: boil tissue sections in pH6, 10mM citrate buffer, for 20 min and allow to cool before testing.

Description

Recognizes a protein of 30-33kDa, which is identified as CD20. It is a non-Ig differentiation antigen of B-cells and its expression is restricted to normal and neoplastic B-cells, being absent from all other leukocytes and tissues. CD20 is expressed by pre B-cells and persists during all stages of B-cell maturation but is lost upon terminal differentiation into plasma cells. This MAb can be used for immunophenotyping of leukemia and malignant cells, B lymphocyte detection in peripheral blood and B cell localization in tissues. It reacts with the majority of B-cells present in peripheral blood and lymphoid tissues and their derived lymphomas. In lymphoid tissue, germinal center blasts and B-immunoblasts are particularly reactive. It is a reliable antibody for ascribing a B-cell phenotype in known lymphoid tissues. Rarely, CD20-positive T-cell lymphomas have been reported. Reactivity has also been noted with Reed-Sternberg cells in cases of Hodgkin's disease, particularly of lymphocyte predominant type.

Application Notes

Optimal dilution of the recombinant CD20 antibody should be determined by the researcher.

Immunogen

A synthetic peptide from the C-terminal region of the human protein was used as the immunogen for the recombinant CD20 antibody.

Storage

Store the recombinant CD20 antibody at 2-8°C (with azide) or aliquot and store at -20°C or colder (without azide).