

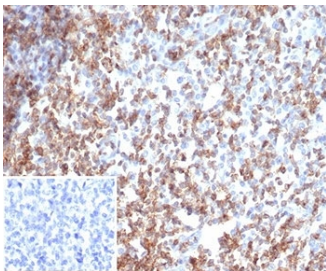
## Recombinant CD2 Antibody / Lymphocyte Function Antigen 2 / LFA-2 [clone rLFA2/7147] (V4023)

Catalog No.	Formulation	Size
V4023-100UG	0.2 mg/ml in 1X PBS with 0.1 mg/ml BSA (US sourced), 0.05% sodium azide	100 ug
V4023-20UG	0.2 mg/ml in 1X PBS with 0.1 mg/ml BSA (US sourced), 0.05% sodium azide	20 ug
V4023SAF-100UG	1 mg/ml in 1X PBS; BSA free, sodium azide free	100 ug

### Recombinant MOUSE MONOCLONAL

[Bulk quote request](#)

Availability	1-3 business days
Species Reactivity	Human
Format	Purified
Clonality	Recombinant Mouse Monoclonal
Isotype	Mouse IgG1, kappa
Clone Name	rLFA2/7147
Purity	Protein A/G affinity
UniProt	P06729
Localization	Cell surface
Applications	Immunohistochemistry (FFPE) : 1-2ug/ml
Limitations	This recombinant CD2 antibody is available for research use only.



IHC staining of FFPE human tonsil tissue with recombinant CD2 antibody (clone rLFA2/7147). Negative control inset: PBS used instead of primary antibody to control for secondary Ab binding. HIER: boil tissue sections in pH 9 10mM Tris with 1mM EDTA for 20 min and allow to cool before testing.

## Description

CD2 interacts with lymphocyte function-associated antigen CD58 (LFA-3) and CD48/BCM1 to mediate adhesion between T-cells and other cell types. [UniProt]

## Application Notes

Optimal dilution of the recombinant CD2 antibody should be determined by the researcher.

## Immunogen

A recombinant fragment from the human protein corresponding to the N-terminal region was used as the immunogen for the recombinant CD2 antibody.

## Storage

Aliquot the recombinant CD2 antibody and store frozen at -20oC or colder. Avoid repeated freeze-thaw cycles.