

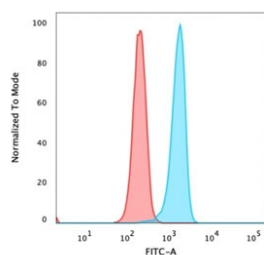
Recombinant Catenin beta Antibody [clone rCTNNB1/1507] (V8478)

Catalog No.	Formulation	Size
V8478-100UG	0.2 mg/ml in 1X PBS with 0.1 mg/ml BSA (US sourced) and 0.05% sodium azide	100 ug
V8478-20UG	0.2 mg/ml in 1X PBS with 0.1 mg/ml BSA (US sourced) and 0.05% sodium azide	20 ug
V8478SAF-100UG	1 mg/ml in 1X PBS; BSA free, sodium azide free	100 ug

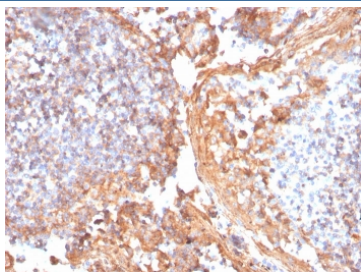
Recombinant **MOUSE MONOCLONAL**

[Bulk quote request](#)

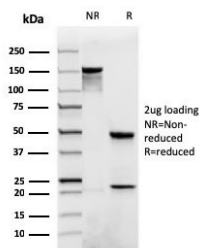
Availability	1-3 business days
Species Reactivity	Human
Format	Purified
Clonality	Recombinant Mouse Monoclonal
Isotype	Mouse IgG1, kappa
Clone Name	rCTNNB1/1507
Purity	Protein G affinity chromatography
UniProt	P35222
Localization	Cell surface and cytoplasmic
Applications	Flow Cytometry : 0.5-1ug/million cells ELISA : order Ab without BSA for coating Immunohistochemistry (FFPE) : 1-2ug/ml for 30 minutes at RT
Limitations	This recombinant Catenin beta antibody is available for research use only.



Flow cytometry testing of PFA-fixed human HeLa cells with recombinant Catenin beta antibody (clone rCTNNB1/1507); Red=isotype control, Blue= recombinant Catenin beta antibody.



IHC staining of FFPE human tonsil with recombinant Catenin beta antibody (clone rCTNNB1/1507). HIER: boil tissue sections in pH 9 10mM Tris with 1mM EDTA for 20 min and allow to cool before testing.



SDS-PAGE analysis of purified, BSA-free recombinant Catenin beta antibody (clone rCTNNB1/1507) as confirmation of integrity and purity.

Description

Beta-catenin associates with the cytoplasmic portion of E-cadherin, which is necessary for the function of E-cadherin as an adhesion molecule. In normal tissues, beta-catenin is localized to the membrane of epithelial cells, consistent with its role in the cell adhesion complex. In breast ductal neoplasia, beta-catenin is usually localized in cellular membranes. However, in lobular neoplasia, a marked redistribution of beta-catenin throughout the cytoplasm results in a diffuse cytoplasmic pattern. Immuno-staining of beta-catenin and E-cadherin is helps in the accurate identification of ductal and lobular neoplasms, including a distinction between low-grade ductal carcinoma in situ (DCIS) and lobular carcinoma. Additionally, some rectal and gastric adenocarcinomas demonstrate diffuse cytoplasmic beta-catenin staining and a lack of membranous staining, mimicking the staining pattern observed with lobular breast carcinomas.

Application Notes

Optimal dilution of the recombinant Catenin beta antibody should be determined by the researcher.

Immunogen

A recombinant human beta-Catenin (p120) protein fragment from the human protein was used as the immunogen for the recombinant Catenin beta antibody.

Storage

Store the recombinant Catenin beta antibody at 2-8oC (with azide) or aliquot and store at -20oC or colder (without azide).