

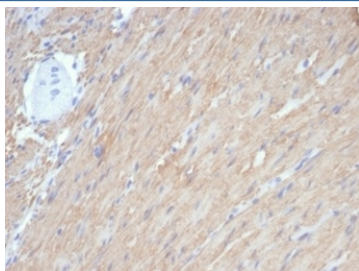
## Recombinant CALD1 Antibody/ Caldesmon / CAD (HMW) [clone rCALD1/7266] (V9402)

Catalog No.	Formulation	Size
V9402-100UG	0.2 mg/ml in 1X PBS with 0.1 mg/ml BSA (US sourced), 0.05% sodium azide	100 ug
V9402-20UG	0.2 mg/ml in 1X PBS with 0.1 mg/ml BSA (US sourced), 0.05% sodium azide	20 ug
V9402SAF-100UG	1 mg/ml in 1X PBS; BSA free, sodium azide free	100 ug

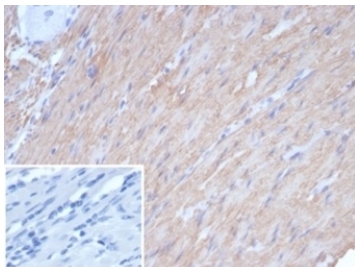
### Recombinant MOUSE MONOCLONAL

[Bulk quote request](#)

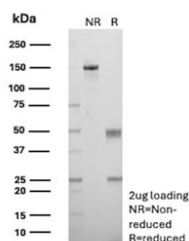
Availability	1-3 business days
Species Reactivity	Human
Format	Purified
Clonality	Recombinant Mouse Monoclonal
Isotype	Mouse IgG1, kappa
Clone Name	rCALD1/7266
Purity	Protein A/G affinity
UniProt	Q05682
Localization	Cytoplasm
Applications	Immunohistochemistry (FFPE) : 1-2ug/ml
Limitations	This recombinant CALD1 antibody is available for research use only.



IHC staining of FFPE human smooth muscle with recombinant CALD1 antibody (clone rCALD1/7266). HIER: boil tissue sections in pH 9 10mM Tris with 1mM EDTA for 20 min and allow to cool before testing.



IHC staining of FFPE human smooth muscle tissue with recombinant CALD1 antibody (clone rCALD1/7266). Negative control inset: PBS instead of primary antibody to control for secondary binding. HIER: boil tissue sections in pH 9 10mM Tris with 1mM EDTA for 20 min and allow to cool before testing.



SDS-PAGE analysis of purified, BSA-free recombinant CALD1 antibody (clone rCALD1/7266) as confirmation of integrity and purity.

## Description

Recognizes a protein of 150kDa, which is identified as the high molecular weight variant of Caldesmon. Two closely related variants of human caldesmon have been identified which are different in their electrophoretic mobility and cellular distribution. The h-caldesmon variant (120-150kDa) is predominantly expressed in smooth muscle whereas l-caldesmon (70-80kDa) is found in non-muscle tissue and cells. Neither of the two variants has been detected in skeletal muscle. This MAb recognizes only the 150kDa variant (h-caldesmon) in Western blots of human aortic media extracts and is unreactive with fibroblast extracts from cultivated human foreskin. Caldesmon is a developmentally regulated protein involved in smooth muscle and non-muscle contraction.

## Application Notes

Optimal dilution of the recombinant CALD1 antibody should be determined by the researcher.

## Immunogen

Recombinant human full-length CALD1 protein was used as the immunogen for the recombinant CALD1 antibody.

## Storage

Aliquot the recombinant CALD1 antibody and store frozen at -20°C or colder. Avoid repeated freeze-thaw cycles.