

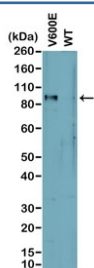
## Recombinant BRAF V600E Antibody [clone RM8] (R20306)

Catalog No.	Formulation	Size
R20306-50UG	1 mg/ml in PBS with 50% Glycerol, 1% BSA and 0.09% sodium azide	50 ug
R20306-100UG	1 mg/ml in PBS with 50% Glycerol, 1% BSA and 0.09% sodium azide	100 ug

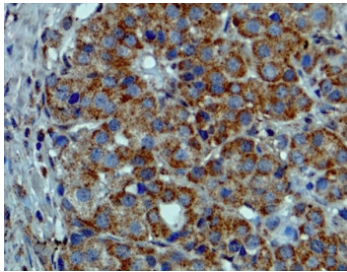
Recombinant **RABBIT MONOCLONAL**

[Bulk quote request](#)

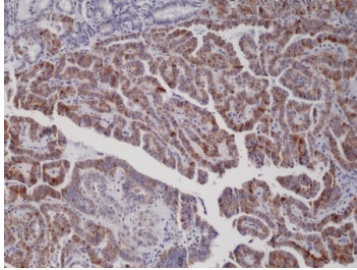
<b>Availability</b>	1-3 business days
<b>Species Reactivity</b>	Human
<b>Format</b>	Purified
<b>Clonality</b>	Recombinant Rabbit Monoclonal
<b>Isotype</b>	Rabbit IgG
<b>Clone Name</b>	RM8
<b>Purity</b>	Protein A purified from animal origin-free supernatant
<b>UniProt</b>	P15056
<b>Localization</b>	Cytoplasmic, nuclear
<b>Applications</b>	Immunohistochemistry (FFPE) : 0.5-5 ug/ml Immunocytochemistry : 2-10 ug/ml Western Blot : 0.5-2 ug/ml
<b>Limitations</b>	This recombinant BRAF V600E antibody is available for research use only.



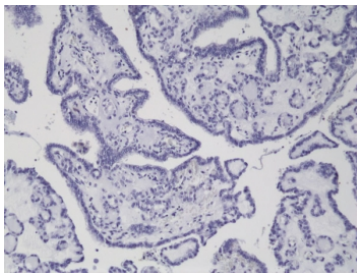
Western blot analysis of cell lysates prepared from cell lines expressing endogenous mutant (V600E) BRAF or wild type (WT) protein with recombinant BRAF V600E antibody.



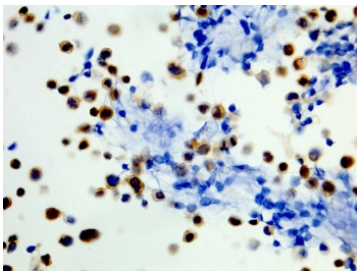
IHC staining of formalin fixed and paraffin embedded melanoma tissue sections with recombinant BRAF V600E antibody. HIER: steam section in pH6 citrate buffer for 20 min and allow to cool prior to testing.



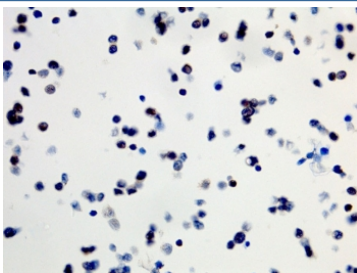
IHC staining of formalin fixed and paraffin embedded thyroid carcinoma tissue with recombinant BRAF V600E antibody. Allele specific PCR validated to be positive for BRAF V600E. HIER: steam section in pH6 citrate buffer for 20 min and allow to cool prior to testing.



IHC staining of formalin fixed and paraffin embedded thyroid carcinoma tissue with recombinant BRAF V600E antibody. Allele specific PCR validated to be negative for BRAF V600E. HIER: steam section in pH6 citrate buffer for 20 min and allow to cool prior to testing.



ICC staining of formalin fixed and paraffin embedded human WiDr cells (400X, Positive) with recombinant BRAF V600E antibody. HIER: steam section in pH6 citrate buffer for 20 min and allow to cool prior to testing.



ICC staining of formalin fixed and paraffin embedded human SW40 cells (400X, Negative) with recombinant BRAF V600E antibody. HIER: steam section in pH6 citrate buffer for 20 min and allow to cool prior to testing.

## Description

This antibody reacts to the BRAF V600E mutant. No cross reactivity seen with wild type BRAF.

## Application Notes

The stated application concentrations are suggested starting points. Titration of the recombinant BRAF V600E antibody may be required due to differences in protocols and secondary/substrate sensitivity.

## Immunogen

A peptide corresponding to BRAF V600E mutant was used as the immunogen for the recombinant BRAF V600E

antibody.

## **Storage**

Store the recombinant BRAF V600E antibody at -20oC.