

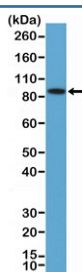
## Recombinant BRAF Antibody // N-Terminal Region [clone RM308] (R20328)

Catalog No.	Formulation	Size
R20328-0.1ML	Antibody in PBS with 50% glycerol, 1% BSA and 0.09% sodium azide	100 ul

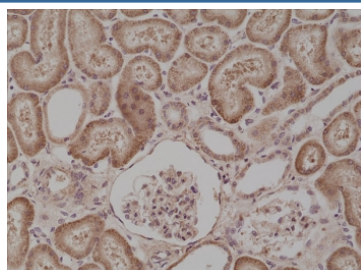
Recombinant **RABBIT MONOCLONAL**

[Bulk quote request](#)

Availability	1-3 business days
Species Reactivity	Human
Predicted Reactivity	Mouse
Format	Purified
Clonality	Recombinant Rabbit Monoclonal
Isotype	Rabbit IgG
Clone Name	RM308
Purity	Protein A purified from animal origin-free supernatant
UniProt	P15056
Localization	Cytoplasmic
Applications	Immunohistochemistry (FFPE) : 1:200-1:500 Western Blot : 1:100-1:200
Limitations	This recombinant BRAF antibody is available for research use only.



Western blot testing of human K562 cell lysate with recombinant BRAF antibody at 1:100 dilution. Predicted molecular weight ~84 kDa.



IHC testing of formalin fixed and paraffin embedded human kidney tissue with recombinant BRAF antibody at 1:500 dilution. HIER: steam section in pH6 citrate buffer for 20 min and allow to cool prior to staining.

## Description

This antibody reacts to human serine/threonine-protein kinase B-raf (BRAF). It may also react to mouse B-raf, as predicted by immunogen homology.

## Application Notes

The stated application concentrations are suggested starting points. Titration of the recombinant BRAF antibody may be required due to differences in protocols and secondary/substrate sensitivity.

## Immunogen

A peptide corresponding to the residues near N-terminus of human B-raf was used as the immunogen for the recombinant BRAF antibody.

## Storage

Store the recombinant BRAF antibody at -20oC.