

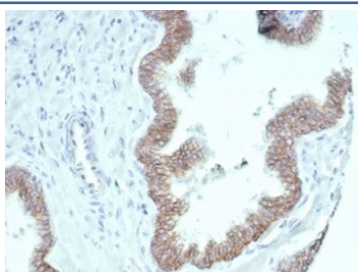
## Recombinant Beta Catenin Antibody [clone CTNNB1/7044R] (V8944)

Catalog No.	Formulation	Size
V8944-100UG	0.2 mg/ml in 1X PBS with 0.1 mg/ml BSA (US sourced), 0.05% sodium azide	100 ug
V8944-20UG	0.2 mg/ml in 1X PBS with 0.1 mg/ml BSA (US sourced), 0.05% sodium azide	20 ug
V8944SAF-100UG	1 mg/ml in 1X PBS; BSA free, sodium azide free	100 ug

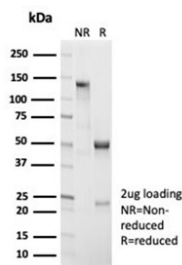
Recombinant **RABBIT MONOCLONAL**

[Bulk quote request](#)

<b>Availability</b>	1-3 business days
<b>Species Reactivity</b>	Human
<b>Format</b>	Purified
<b>Clonality</b>	Recombinant Rabbit Monoclonal
<b>Isotype</b>	Rabbit IgG, kappa
<b>Clone Name</b>	CTNNB1/7044R
<b>Purity</b>	Protein A affinity
<b>UniProt</b>	P35222
<b>Localization</b>	Cell surface, Cytoplasm
<b>Applications</b>	Immunohistochemistry (FFPE) : 1-2ug/ml
<b>Limitations</b>	This recombinant Beta Catenin antibody is available for research use only.



IHC staining of FFPE human prostate carcinoma tissue with recombinant Beta Catenin antibody (clone CTNNB1/7044R). HIER: boil tissue sections in pH 9 10mM Tris with 1mM EDTA for 20 min and allow to cool before testing.



SDS-PAGE analysis of purified, BSA-free recombinant Beta Catenin antibody (clone CTNNB1/7044R) as confirmation of integrity and purity.

## Description

Beta-catenin associates with the cytoplasmic portion of E-cadherin, which is necessary for the function of E-cadherin as an adhesion molecule. In normal tissues, beta-catenin is localized to the membrane of epithelial cells, consistent with its role in the cell adhesion complex. In breast ductal neoplasia, beta-catenin is usually localized in cellular membranes. However, in lobular neoplasia, a marked redistribution of beta-catenin throughout the cytoplasm results in a diffuse cytoplasmic pattern. Immuno-staining of beta-catenin and E-cadherin is helps in the accurate identification of ductal and lobular neoplasms, including a distinction between low-grade ductal carcinoma in situ (DCIS) and lobular carcinoma. Additionally, some rectal and gastric adenocarcinomas demonstrate diffuse cytoplasmic beta-catenin staining and a lack of membranous staining, mimicking the staining pattern observed with lobular breast carcinomas.

## Application Notes

Optimal dilution of the recombinant Beta Catenin antibody should be determined by the researcher.

## Immunogen

Recombinant full-length human Beta Catenin protein was used as the immunogen for the recombinant Beta Catenin antibody.

## Storage

Aliquot the recombinant Beta Catenin antibody and store frozen at -20oC or colder. Avoid repeated freeze-thaw cycles.