

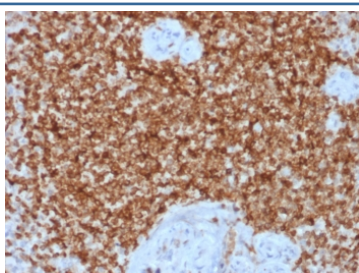
## Recombinant Bcl2 Antibody / Rabbit Monoclonal [clone BCL2/1878R] (V3542)

Catalog No.	Formulation	Size
V3542-100UG	0.2 mg/ml in 1X PBS with 0.1 mg/ml BSA (US sourced) and 0.05% sodium azide	100 ug
V3542-20UG	0.2 mg/ml in 1X PBS with 0.1 mg/ml BSA (US sourced) and 0.05% sodium azide	20 ug
V3542SAF-100UG	1 mg/ml in 1X PBS; BSA free, sodium azide free	100 ug
V3542IHC-7ML	Prediluted in 1X PBS with 0.1 mg/ml BSA (US sourced) and 0.05% sodium azide; *For IHC use only*	7 ml

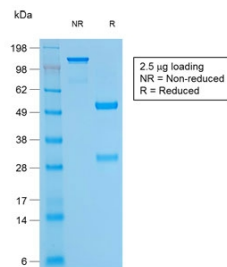
Recombinant RABBIT MONOCLONAL

[Bulk quote request](#)

Availability	1-3 business days
Species Reactivity	Human
Format	Purified
Clonality	Recombinant Rabbit Monoclonal
Isotype	Rabbit IgG, kappa
Clone Name	BCL2/1878R
Purity	Protein A affinity chromatography
UniProt	P10415
Localization	Cytoplasmic, membrane
Applications	Western Blot : 1-2ug/ml Immunohistochemistry (FFPE) : 1-2ug/ml for 30 min at RT
Limitations	This recombinant Bcl2 antibody is available for research use only.



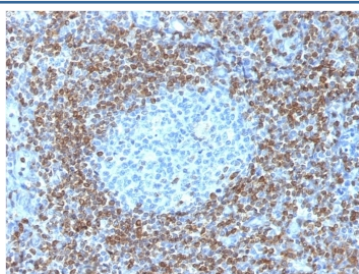
IHC testing of FFPE human spleen tissue with recombinant Bcl2 antibody (clone BCL2/1878R). HIER: boil tissue sections in 1mM EDTA buffer, pH 7.5-8.5, for 10-20 min followed by cooling at RT for 20 min.



SDS-PAGE analysis of purified, BSA-free Bcl2 antibody (clone BCL2/1878R) as confirmation of integrity and purity.



Western blot testing of human MCF7 cell lysate with recombinant Bcl2 antibody (clone BCL2/1878R). Expected molecular weight ~26 kDa.



IHC testing of FFPE human tonsil tissue with recombinant Bcl2 antibody (clone BCL2/1878R). HIER: boil tissue sections in 1mM EDTA buffer, pH8, for 10-20 min followed by cooling at RT for 20 min.

## Description

This antibody recognizes a protein of 25-26kDa, identified as the Bcl-2 alpha oncoprotein. It shows no cross-reaction with Bcl-x or Bax protein. Expression of bcl-2 alpha oncoprotein inhibits the programmed cell death (apoptosis). In most follicular lymphomas, neoplastic germinal centers express high levels of bcl-2 alpha protein, whereas the normal or hyperplastic germinal centers are negative. Consequently, this antibody is valuable when distinguishing between reactive and neoplastic follicular proliferation in lymph node biopsies. It may also be used in distinguishing between those follicular lymphomas that express bcl-2 protein and the small number in which the neoplastic cells are bcl-2 negative.

## Application Notes

The optimal dilution of the recombinant Bcl2 antibody for each application should be determined by the researcher.

1. The prediluted format is supplied in a dropper bottle and is optimized for use in IHC. After epitope retrieval step (if required), drip mAb solution onto the tissue section and incubate at RT for 30 min.

## Immunogen

Recombinant full length human protein was used as the immunogen for this recombinant Bcl2 antibody.

## Storage

Store the recombinant Bcl2 antibody at 2-8°C (with azide) or aliquot and store at -20°C or colder (without azide).

