

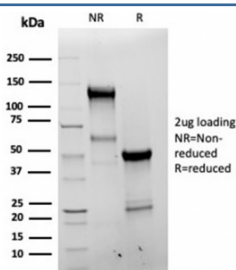
## Recombinant Bcl-X Antibody / BCL2L1 [clone BCL2L1/4509R] (V9725)

| Catalog No.    | Formulation   | Size   |
|----------------|---|--------|
| V9725-100UG    | 0.2 mg/ml in 1X PBS with 0.1 mg/ml BSA (US sourced), 0.05% sodium azide | 100 ug |
| V9725-20UG     | 0.2 mg/ml in 1X PBS with 0.1 mg/ml BSA (US sourced), 0.05% sodium azide | 20 ug  |
| V9725SAF-100UG | 1 mg/ml in 1X PBS; BSA free, sodium azide free                          | 100 ug |

Recombinant **RABBIT MONOCLONAL**

[Bulk quote request](#)

|                           |   |
|---------------------------|---|
| <b>Availability</b>       | 1-3 business days   |
| <b>Species Reactivity</b> | Human   |
| <b>Format</b>             | Purified  |
| <b>Clonality</b>          | Recombinant Rabbit Monoclonal                                       |
| <b>Isotype</b>            | Rabbit IgG, kappa   |
| <b>Clone Name</b>         | BCL2L1/4509R  |
| <b>Purity</b>             | Protein A/G affinity  |
| <b>UniProt</b>            | Q07817  |
| <b>Localization</b>       | Cytoplasm, Cell membrane, Nuclear membrane                          |
| <b>Applications</b>       | Immunohistochemistry (FFPE) : 1-2ug/ml                              |
| <b>Limitations</b>        | This recombinant Bcl-X antibody is available for research use only. |



SDS-PAGE analysis of purified, BSA-free recombinant Bcl-X antibody (clone BCL2L1/4509R) as confirmation of integrity and purity.

## Description

Recognizes a protein of 27kDa, identified as the Bcl-X protein. This MAb shows no cross-reaction with Bcl-2 or Bax protein. Bcl-X has two isoforms, Bcl-XL (long), a 241-amino acid protein which suppresses cell death. And Bcl-XS (short), a 178-amino acid protein lacking a 63-amino acid domain which functions as a dominant inhibitor of Bcl-2.

## **Application Notes**

Optimal dilution of the recombinant Bcl-X antibody should be determined by the researcher.

## **Immunogen**

A portion of amino acids 1-100 was used as the immunogen for the recombinant Bcl-X antibody.

## **Storage**

Aliquot the recombinant Bcl-X antibody and store frozen at -20oC or colder. Avoid repeated freeze-thaw cycles.