

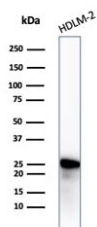
## Recombinant Bcl-2 Antibody [clone rBCL2/6418] (V8937)

Catalog No.	Formulation	Size
V8937-100UG	0.2 mg/ml in 1X PBS with 0.1 mg/ml BSA (US sourced), 0.05% sodium azide	100 ug
V8937-20UG	0.2 mg/ml in 1X PBS with 0.1 mg/ml BSA (US sourced), 0.05% sodium azide	20 ug
V8937SAF-100UG	1 mg/ml in 1X PBS; BSA free, sodium azide free	100 ug

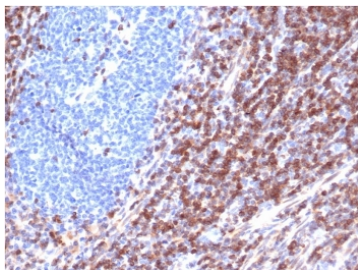
Recombinant **MOUSE MONOCLONAL**

[Bulk quote request](#)

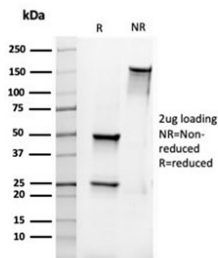
Availability	1-3 business days
Species Reactivity	Human
Format	Purified
Clonality	Recombinant Mouse Monoclonal
Isotype	Mouse IgG2a, kappa
Clone Name	rBCL2/6418
Purity	Protein A/G affinity
UniProt	P10415
Localization	Cytoplasm, nuclear membrane
Applications	Immunohistochemistry (FFPE) : 1-2ug/ml Western Blot : 2-4ug/ml
Limitations	This recombinant Bcl-2 antibody is available for research use only.



Western blot testing of human HDLM-2 cell lysate with recombinant Bcl-2 antibody.  
Predicted molecular weight ~26 kDa.



IHC staining of FFPE human tonsil tissue with recombinant Bcl-2 antibody (clone rBCL2/6418). HIER: boil tissue sections in pH 9 10mM Tris with 1mM EDTA for 20 min and allow to cool before testing.



SDS-PAGE analysis of purified, BSA-free recombinant Bcl-2 antibody (rBCL2/6418) as confirmation of integrity and purity.

## Description

This antibody recognizes a protein of 25-26kDa, identified as the bcl-2 alpha oncoprotein. It shows no cross-reaction with Bcl-x or Bax protein. Expression of Bcl-2 alpha oncoprotein inhibits the programmed cell death (apoptosis). In most follicular lymphomas, neoplastic germinal centers express high levels of bcl-2 alpha protein, whereas the normal or hyperplastic germinal centers are negative. Consequently, this antibody is valuable when distinguishing between reactive and neoplastic follicular proliferation in lymph node biopsies. It may also be used in distinguishing between those follicular lymphomas that express bcl-2 protein and the small number in which the neoplastic cells are bcl-2 negative.

## Application Notes

Optimal dilution of the recombinant Bcl-2 antibody should be determined by the researcher.

## Immunogen

Amino acids 41-54 (GAAPAPGIFSSQPG) from the human protein were used as the immunogen for the recombinant Bcl-2 antibody.

## Storage

Aliquot the recombinant Bcl-2 antibody and store frozen at -20oC or colder. Avoid repeated freeze-thaw cycles.