

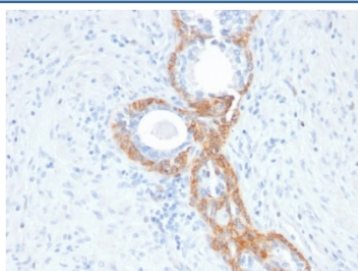
## Recombinant Basic Cytokeratin Antibody [clone rKRTH/2148] (V3813)

Catalog No.	Formulation	Size
V3813-100UG	0.2 mg/ml in 1X PBS with 0.1 mg/ml BSA (US sourced) and 0.05% sodium azide	100 ug
V3813-20UG	0.2 mg/ml in 1X PBS with 0.1 mg/ml BSA (US sourced) and 0.05% sodium azide	20 ug
V3813SAF-100UG	1 mg/ml in 1X PBS; BSA free, sodium azide free	100 ug

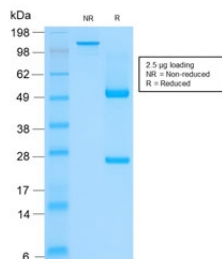
Recombinant **MOUSE MONOCLONAL**

[Bulk quote request](#)

<b>Availability</b>	1-3 business days
<b>Species Reactivity</b>	Human, Mouse, Rat
<b>Format</b>	Purified
<b>Clonality</b>	Recombinant Mouse Monoclonal
<b>Isotype</b>	Mouse IgG1, kappa
<b>Clone Name</b>	rKRTH/2148
<b>Purity</b>	Protein G affinity chromatography
<b>UniProt</b>	Q01546
<b>Localization</b>	Cytoplasmic
<b>Applications</b>	Immunohistochemistry (FFPE) : 0.5-1ug/ml for 30 min at RT
<b>Limitations</b>	This recombinant Basic Cytokeratin antibody is available for research use only.



IHC testing of FFPE human prostate cancer with recombinant Basic Cytokeratin antibody (clone rKRTH/2148). Required HIER: boil tissue sections in 10mM citrate buffer, pH 6, for 10-20 min followed by cooling at RT for 20 min.



SDS-PAGE analysis of purified, BSA-free recombinant Basic Cytokeratin antibody (clone rKRT/2148) as confirmation of integrity and purity.

## Description

This antibody recognizes CK1, CK5, CK10 and CK14. In normal epithelia, it stains stratified epithelia, myoepithelial cells and basal cells in the prostate gland and bronchi. This MAb shows no reactivity with hepatocytes, pancreatic acinar cells, proximal renal tubules, or endometrial glands; there is no reactivity with cells derived from simple epithelia. Mesenchymal tumors, lymphomas, melanomas, neural tumors, and neuroendocrine tumors are negative with this antibody. It stains myoepithelial cells and has been shown to be useful in distinguishing prostate adenocarcinoma from benign prostate. This antibody has also been useful in separating benign from malignant intraductal breast proliferations.

## Application Notes

Optimal dilution of the recombinant Basic Cytokeratin antibody should be determined by the researcher.

## Immunogen

Recombinant full-length of human KRT76 protein was used as the immunogen for the recombinant Basic Cytokeratin antibody.

## Storage

Store the recombinant Basic Cytokeratin antibody at 2-8°C (with azide) or aliquot and store at -20°C or colder (without azide).