

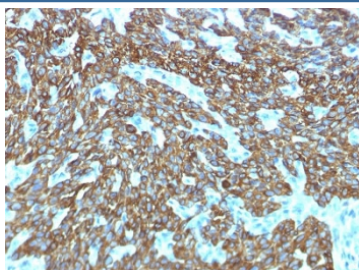
Recombinant Basic Cytokeratin Antibody / Rabbit Monoclonal [clone KRTH/1576R] (V3489)

Catalog No.	Formulation	Size
V3489-100UG	0.2 mg/ml in 1X PBS with 0.1 mg/ml BSA (US sourced) and 0.05% sodium azide	100 ug
V3489-20UG	0.2 mg/ml in 1X PBS with 0.1 mg/ml BSA (US sourced) and 0.05% sodium azide	20 ug
V3489SAF-100UG	1 mg/ml in 1X PBS; BSA free, sodium azide free	100 ug
V3489IHC-7ML	Prediluted in 1X PBS with 0.1 mg/ml BSA (US sourced) and 0.05% sodium azide; *For IHC use only*	7 ml

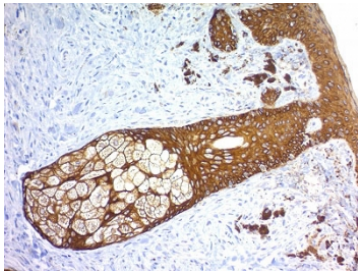
Recombinant **RABBIT MONOCLONAL**

[Bulk quote request](#)

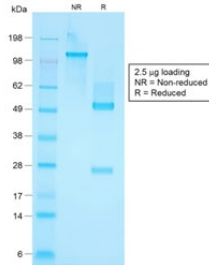
Availability	1-3 business days
Species Reactivity	Human
Format	Purified
Clonality	Recombinant Rabbit Monoclonal
Isotype	Rabbit IgG, kappa
Clone Name	KRTH/1576R
Purity	Protein A affinity chromatography
UniProt	Q01546
Localization	Cytoplasmic
Applications	Immunohistochemistry (FFPE) : 0.25-0.5ug/ml for 30 min at RT
Limitations	This recombinant Basic Cytokeratin antibody is available for research use only.



IHC testing of FFPE human skin with recombinant Basic Cytokeratin antibody (clone KRTH/1576R). Required HIER: boil tissue sections in 10mM citrate buffer, pH 6, for 10-20 min followed by cooling at RT for 20 min.



IHC testing of FFPE human skin with recombinant Basic Cytokeratin antibody (clone KRTH/1576R). Required HIER: boil tissue sections in 10mM citrate buffer, pH 6, for 10-20 min followed by cooling at RT for 20 min.



SDS-PAGE analysis of purified, BSA-free recombinant Basic Cytokeratin antibody (clone KRTH/1576R) as confirmation of integrity and purity.

Description

This mAb recognizes basic (Type II or HMW) cytokeratins, which include 67kDa (CK1); 64kDa (CK3); 59kDa (CK4); 58kDa (CK5); 56kDa (CK6); 52kDa (CK8). Twenty human keratins are resolved with two-dimensional gel electrophoresis into acidic (pI 6.0) subfamilies. The acidic keratins have molecular weights (MW) of 56.5, 55, 51, 50, 50, 48, 46, 45, and 40kDa. Many studies have shown the usefulness of keratins as markers in cancer research and tumor diagnosis.

Application Notes

Optimal dilution of the recombinant Basic Cytokeratin antibody should be determined by the researcher.

1. The prediluted format is supplied in a dropper bottle and is optimized for use in IHC. After epitope retrieval step (if required), drip mAb solution onto the tissue section and incubate at RT for 30 min.

Immunogen

Recombinant human KRT76 protein was used as the immunogen for the recombinant Basic Cytokeratin antibody.

Storage

Store the recombinant Basic Cytokeratin antibody at 2-8°C (with azide) or aliquot and store at -20°C or colder (without azide).