

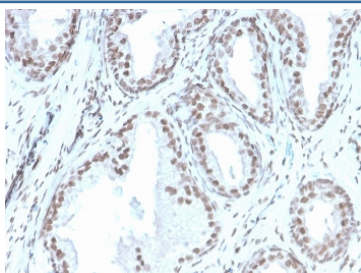
Recombinant ATRX Antibody [clone rATRX/3446] (V8409)

Catalog No.	Formulation	Size
V8409-100UG	0.2 mg/ml in 1X PBS with 0.1 mg/ml BSA (US sourced) and 0.05% sodium azide	100 ug
V8409-20UG	0.2 mg/ml in 1X PBS with 0.1 mg/ml BSA (US sourced) and 0.05% sodium azide	20 ug
V8409SAF-100UG	1 mg/ml in 1X PBS; BSA free, sodium azide free	100 ug

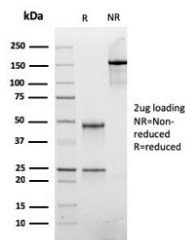
Recombinant **MOUSE MONOCLONAL**

[Bulk quote request](#)

Availability	1-3 business days
Species Reactivity	Human
Format	Purified
Clonality	Recombinant Mouse Monoclonal
Isotype	Mouse IgG1, kappa
Clone Name	rATRX/3446
Purity	Protein G affinity chromatography
UniProt	P46100
Localization	Nuclear
Applications	Immunohistochemistry (FFPE) : 1-2ug/ml for 30 minutes at RT
Limitations	This recombinant ATRX antibody is available for research use only.



IHC staining of FFPE human prostate with recombinant ATRX antibody (clone rATRX/3446). HIER: boil tissue sections in pH 9 10mM Tris with 1mM EDTA for 20 min and allow to cool before testing.



SDS-PAGE analysis of purified, BSA-free recombinant ATRX antibody as confirmation of integrity and purity.

Description

ATRX is a member of the Snf2 family of helicase/ATPases, which contribute to the remodeling of the nucleosome structure in an ATP-dependent manner, and facilitate the initiation of transcription and replication. Structurally, ATRX contains a PHD zinc finger motif. ATRX is regulated throughout the cell cycle where it is differentially distributed within the nucleus. During interphase, ATRX predominately associates with the nuclear matrix, while during mitosis, ATRX localizes with condensed chromatin. At the onset of M phase, phosphorylation rapidly induces this redistribution of ATRX to the short arms of human acrocentric chromosomes, where it then specifically complexes with heterochromatin protein 1 (HP1). ATRX is associated with the X-linked form of alpha-thalassemia or ATRX syndrome.

Application Notes

Optimal dilution of the recombinant ATRX antibody should be determined by the researcher.

Immunogen

Recombinant full-length human ATRX protein was used as the immunogen for the recombinant ATRX antibody.

Storage

Store the recombinant ATRX antibody at 2-8°C (with azide) or aliquot and store at -20°C or colder (without azide).