

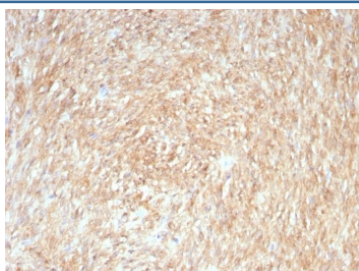
Recombinant ANO1 Antibody / DOG1 / TMEM16A [clone rDG1/8750] (V5844)

Catalog No.	Formulation	Size
V5844-100UG	0.2 mg/ml in 1X PBS with 0.1 mg/ml BSA (US sourced) and 0.05% sodium azide	100 ug
V5844-20UG	0.2 mg/ml in 1X PBS with 0.1 mg/ml BSA (US sourced) and 0.05% sodium azide	20 ug
V5844SAF-100UG	1 mg/ml in 1X PBS; BSA free, sodium azide free	100 ug

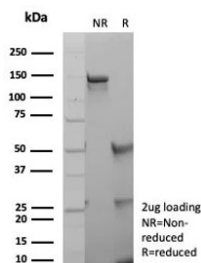
Recombinant **MOUSE MONOCLONAL**

[Bulk quote request](#)

Species Reactivity	Human
Format	Purified
Clonality	Recombinant Mouse Monoclonal
Isotype	Mouse IgG2b, kappa
Clone Name	rDG1/8750
Purity	Protein G affinity chromatography
UniProt	Q5XXA6
Gene ID	55107
Localization	Cell Surface and Cytoplasmic
Applications	Immunohistochemistry (FFPE) : 1-2ug/ml for 30 min at RT
Limitations	This recombinant ANO1 antibody is available for research use only.



IHC testing of FFPE human gastrointestinal stromal tumor (GIST) with ANO1 antibody (clone rDG1/8750). Required HIER: boil tissue sections in pH 9 10mM Tris with 1mM EDTA for 10-20 min followed by cooling at RT for 20 min.



SDS-PAGE analysis of purified, BSA-free recombinant ANO1 antibody (clone rDG1/8750) as confirmation of integrity and purity.

Description

Expression of DOG1/ANO1 protein is elevated in the gastrointestinal stromal tumors (GIST's), c-kit signaling-driven mesenchymal tumors of the GI tract. It is rarely expressed in other soft tissue tumors, which, due to appearance, may be difficult to diagnose. Immunoreactivity for ANO1 has been reported in 97.8 percent of scorable GIST's, including all c-kit negative GIST's. Overexpression has been suggested to aid in the identification of GISTs, including Platelet-Derived Growth Factor Receptor Alpha mutants that fail to express c-kit antigen. The overall sensitivity of ANO1 and c-kit in GIST's is nearly identical: 94.4% vs. 94.7%.

Application Notes

The concentration stated for each application is a general starting point. Variations in protocols, secondaries and substrates may require the recombinant ANO1 antibody to be titrated up or down for optimal performance.

1. The prediluted format is supplied in a dropper bottle and is optimized for use in IHC. After epitope retrieval step (if required), drip mAb solution onto the tissue section and incubate at RT for 30 min.

Immunogen

A recombinant human full length protein was used as the immunogen for this recombinant ANO1 antibody.

Storage

Store the recombinant ANO1 antibody at 2-8oC (with azide) or aliquot and store at -20oC or colder (without azide).

References (1)