

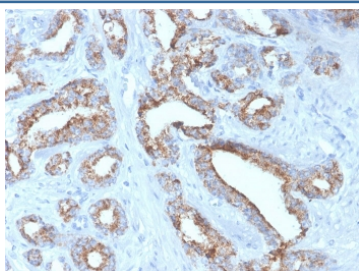
Recombinant AMACR Antibody [clone rAMACR/4674] (V8645)

Catalog No.	Formulation	Size
V8645-100UG	0.2 mg/ml in 1X PBS with 0.1 mg/ml BSA (US sourced) and 0.05% sodium azide	100 ug
V8645-20UG	0.2 mg/ml in 1X PBS with 0.1 mg/ml BSA (US sourced) and 0.05% sodium azide	20 ug
V8645SAF-100UG	1 mg/ml in 1X PBS; BSA free, sodium azide free	100 ug

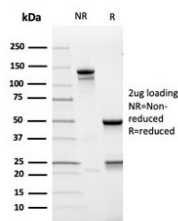
Recombinant **MOUSE MONOCLONAL**

[Bulk quote request](#)

Availability	1-3 business days
Species Reactivity	Human
Format	Purified
Clonality	Recombinant Mouse Monoclonal
Isotype	Mouse IgG2a, kappa
Clone Name	rAMACR/4674
Purity	Protein G affinity chromatography
UniProt	Q9UHK6
Localization	Cytoplasmic
Applications	Immunohistochemistry (FFPE) : 1-2ug/ml for 30 minutes at RT
Limitations	This recombinant AMACR antibody is available for research use only.



IHC staining of FFPE human prostate carcinoma with recombinant AMACR antibody (clone rAMACR/4674). HIER: boil tissue sections in pH 9 10mM Tris with 1mM EDTA for 20 min and allow to cool before testing.



SDS-PAGE analysis of purified, BSA-free recombinant AMACR antibody (clone rAMACR/4674) as confirmation of integrity and purity.

Description

This antibody recognizes a protein of 42kDa, which is identified as AMACR, also known as p504S. It is an enzyme that is involved in bile acid biosynthesis and -oxidation of branched-chain fatty acids. AMACR is essential in lipid metabolism. It is expressed in cells of premalignant high-grade prostatic intraepithelial neoplasia (HGPIN) and prostate adenocarcinoma. The majority of the carcinoma cells show a distinct granular cytoplasmic staining reaction. AMACR is present at low or undetectable levels in glandular epithelial cells of normal prostate and benign prostatic hyperplasia. A spotty granular cytoplasmic staining is seen in a few cells of the benign glands. AMACR is expressed in normal liver (hepatocytes), kidney (tubular epithelial cells) and gall bladder (epithelial cells). Expression has also been found in lung (bronchial epithelial cells) and colon (colonic surface epithelium). AMACR expression can also be found in hepatocellular carcinoma and kidney carcinoma. Past studies have also shown that AMACR is expressed in various colon carcinomas (well, moderately and poorly differentiated) and over expressed in prostate carcinoma.

Application Notes

Optimal dilution of the recombinant AMACR antibody should be determined by the researcher.

Immunogen

Recombinant full-length human AMACR protein was used as the immunogen for the recombinant AMACR antibody.

Storage

Store the recombinant AMACR antibody at 2-8oC (with azide) or aliquot and store at -20oC or colder (without azide).