

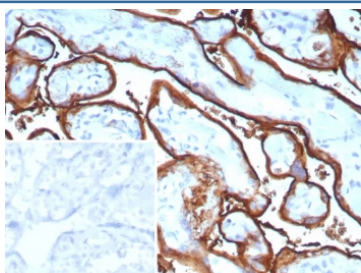
## Recombinant ALPP Antibody / Placental Alkaline Phosphatase [clone ALPP/9109R] (V5430)

Catalog No.	Formulation	Size
V5430-100UG	0.2 mg/ml in 1X PBS with 0.1 mg/ml BSA (US sourced), 0.05% sodium azide	100 ug
V5430-20UG	0.2 mg/ml in 1X PBS with 0.1 mg/ml BSA (US sourced), 0.05% sodium azide	20 ug
V5430SAF-100UG	1 mg/ml in 1X PBS; BSA free, sodium azide free	100 ug

Recombinant **RABBIT MONOCLONAL**

[Bulk quote request](#)

Availability	1-3 business days
Species Reactivity	Human
Format	Purified
Clonality	Recombinant Rabbit Monoclonal
Isotype	Rabbit IgG, kappa
Clone Name	ALPP/9109R
Purity	Protein A/G affinity
UniProt	P05187
Localization	Cytoplasm, Cell membrane
Applications	Immunohistochemistry (FFPE) : 1-2ug/ml
Limitations	This recombinant ALPP antibody is available for research use only.



IHC staining of FFPE human tonsil tissue with recombinant ALPP antibody (clone ALPP/9109R). Inset: PBS used in place of primary Ab (secondary Ab negative control).

### Description

Reacts with a 70kDa membrane-bound isozyme (Regan and Nagao type) of Placental Alkaline Phosphatase (PLAP) occurring in the placenta during the 3rd trimester of gestation. It is highly specific for PLAP and shows no cross-reaction with other isozymes of alkaline phosphatase. Anti-PLAP reacts with germ cell tumors and can discriminate between these

and other neoplasms. Somatic neoplasms e.g. breast, gastrointestinal, prostatic, and urinary cancers may also immunoreact with antibodies to PLAP. Anti-PLAP positivity in conjunction with anti-keratin negativity favors seminoma over carcinoma. Germ cell tumors are usually anti-keratin positive, but they regularly fail to stain with anti-EMA, whereas most carcinomas stain with anti-EMA. Anti-PLAP has been useful in the diagnosis of gestational trophoblastic disease.

## **Application Notes**

Optimal dilution of the recombinant ALPP antibody should be determined by the researcher.

## **Immunogen**

Recombinant full-length human Placental Alkaline Phosphatase protein was used as the immunogen for the recombinant ALPP antibody.

## **Storage**

Aliquot the recombinant ALPP antibody and store frozen at -20oC or colder. Avoid repeated freeze-thaw cycles.