

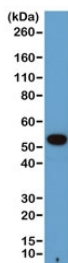
## Recombinant Alpha Tubulin Antibody / TUBA1B (Loading Control) [clone RM113] (R20196)

| Catalog No.  | Formulation  | Size   |
|--------------|--|--------|
| R20196-0.1ML | Antibody in PBS with 50% glycerol, 1% BSA and 0.09% sodium azide | 100 ul |

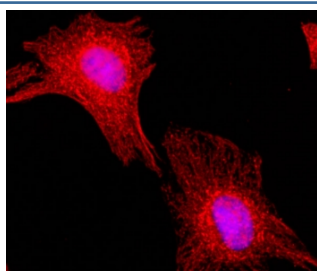
Recombinant **RABBIT MONOCLONAL**

[Bulk quote request](#)

|                    |   |
|--------------------|---|
| Availability       | 1-3 business days   |
| Species Reactivity | All Species   |
| Format             | Purified  |
| Clonality          | Recombinant Rabbit Monoclonal   |
| Isotype            | Rabbit IgG  |
| Clone Name         | RM113   |
| Purity             | Protein A purified from animal origin-free supernatant                      |
| UniProt            | P68363  |
| Gene ID            | 10376   |
| Applications       | Western Blot : 1:1000<br>Immunofluorescence/Immunocytochemistry : 1:200     |
| Limitations        | This recombinant Alpha Tubulin antibody is available for research use only. |



Western blot of human A431 cells with recombinant Alpha Tubulin antibody at 1:1000. Predicted molecular weight ~50 kDa.



ICC staining of human HeLa cells using the recombinant Alpha Tubulin antibody at 1:200 (red) and nuclei with DAPI (blue).

## Description

This recombinant Alpha Tubulin antibody reacts to  $\alpha$ -Tubulin, including Tubulin alpha-1A chain and Tubulin alpha-1B chain.

## Application Notes

The stated application concentrations are suggested starting points. Titration of the recombinant Alpha Tubulin antibody may be required due to differences in protocols and secondary/substrate sensitivity.

1. A pH6 Citrate buffer or pH9 Tris/EDTA buffer HIER step is recommended for testing of FFPE tissue sections.

## Immunogen

A peptide corresponding to the C-terminus of  $\alpha$ -Tubulin was used as the immunogen for this recombinant Alpha Tubulin antibody.

## Storage

Store the recombinant Alpha Tubulin antibody at -20°C (with glycerol) or aliquot and store at -20°C (without glycerol).