

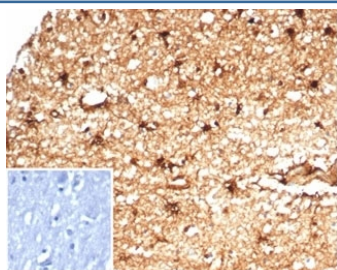
## Recombinant Aldehyde Dehydrogenase 1A1 Antibody / ALDH1A1 [clone ALDH1A1/7011R] (V9491)

Catalog No.	Formulation	Size
V9491-100UG	0.2 mg/ml in 1X PBS with 0.1 mg/ml BSA (US sourced), 0.05% sodium azide	100 ug
V9491-20UG	0.2 mg/ml in 1X PBS with 0.1 mg/ml BSA (US sourced), 0.05% sodium azide	20 ug
V9491SAF-100UG	1 mg/ml in 1X PBS; BSA free, sodium azide free	100 ug

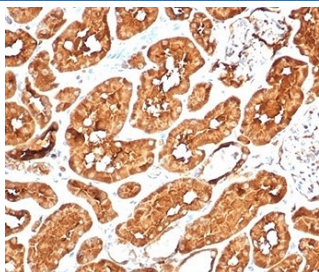
Recombinant **RABBIT MONOCLONAL**

[Bulk quote request](#)

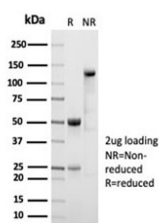
<b>Availability</b>	1-3 business days
<b>Species Reactivity</b>	Human
<b>Format</b>	Purified
<b>Clonality</b>	Recombinant Rabbit Monoclonal
<b>Isotype</b>	Rabbit IgG, kappa
<b>Clone Name</b>	ALDH1A1/7011R
<b>Purity</b>	Protein A/G affinity
<b>UniProt</b>	P00352
<b>Localization</b>	Cytoplasm
<b>Applications</b>	Immunohistochemistry (FFPE) : 1-2ug/ml Western Blot : 2-4ug/ml
<b>Limitations</b>	This recombinant Aldehyde Dehydrogenase 1A1 antibody is available for research use only.



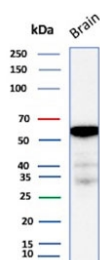
IHC staining of FFPE human brain tissue with recombinant Aldehyde Dehydrogenase 1A1 antibody (clone ALDH1A1/7011R). Negative control inset: PBS instead of primary antibody to control for secondary binding. HIER: boil tissue sections in pH 9 10mM Tris with 1mM EDTA for 20 min and allow to cool before testing.



IHC staining of FFPE human kidney tissue with recombinant Aldehyde Dehydrogenase 1A1 antibody (clone ALDH1A1/7011R). HIER: boil tissue sections in pH 9 10mM Tris with 1mM EDTA for 20 min and allow to cool before testing.



SDS-PAGE analysis of purified, BSA-free recombinant Aldehyde Dehydrogenase 1A1 antibody (clone ALDH1A1/7011R) as confirmation of integrity and purity.



Western blot testing of human brain tissue lysate using recombinant Aldehyde Dehydrogenase 1A1 antibody (clone ALDH1A1/7011R). Expected molecular weight ~55 kDa.

## Description

ALDH1A1 belongs to the ALDH enzymes, a family of evolutionarily conserved enzymes comprised of 19 isoforms that are localized in the cytoplasm, mitochondria or nucleus. ALDH1A1 is predominantly expressed in the epithelium of testis, brain, eye, liver, kidney, as well as neural and hematopoietic stem cells. Reportedly, high ALDH1A1 expression is found in solitary fibrous tumor (SFT) and hemangiopericytoma (HPC), compared to meningiomas and synovial sarcomas. In combination with CD34, ALDH1A1 may be useful for the differentiation among SFT, HPC, meningioma, and synovial sarcoma.

## Application Notes

Optimal dilution of the recombinant Aldehyde Dehydrogenase 1A1 antibody should be determined by the researcher.

## Immunogen

A portion of amino acids 315-434 was used as the immunogen for the recombinant Aldehyde Dehydrogenase 1A1 antibody.

## Storage

Aliquot the recombinant Aldehyde Dehydrogenase 1A1 ALDH1A1 antibody and store frozen at -20°C or colder. Avoid repeated freeze-thaw cycles.

