

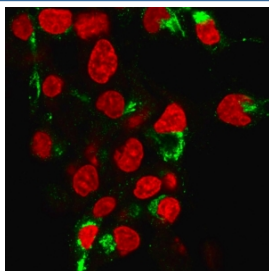
## Recombinant Albumin Antibody [clone ALB/6413R] (V8908)

Catalog No.	Formulation	Size
V8908-100UG	0.2 mg/ml in 1X PBS with 0.1 mg/ml BSA (US sourced), 0.05% sodium azide	100 ug
V8908-20UG	0.2 mg/ml in 1X PBS with 0.1 mg/ml BSA (US sourced), 0.05% sodium azide	20 ug
V8908SAF-100UG	1 mg/ml in 1X PBS; BSA free, sodium azide free	100 ug

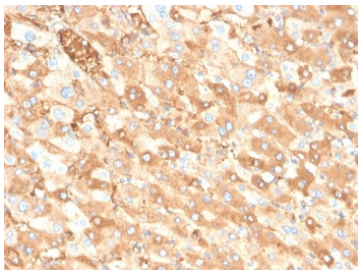
Recombinant **RABBIT MONOCLONAL**

[Bulk quote request](#)

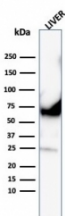
<b>Availability</b>	1-3 business days
<b>Species Reactivity</b>	Human
<b>Format</b>	Purified
<b>Clonality</b>	Recombinant Rabbit Monoclonal
<b>Isotype</b>	Rabbit IgG
<b>Clone Name</b>	ALB/6413R
<b>Purity</b>	Protein A/G affinity
<b>UniProt</b>	P02768
<b>Localization</b>	Cell surface, Cytoplasm
<b>Applications</b>	ELISA (order BSA-free Format For Coating) : Immunofluorescence : 1-2ug/ml Western Blot : 1-2ug/ml Immunohistochemistry (FFPE) : 1-2ug/ml
<b>Limitations</b>	This recombinant Albumin antibody is available for research use only.



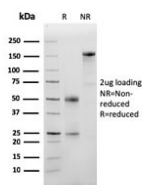
Immunofluorescent staining of human HeP-G2 cells labeled with recombinant Albumin antibody (green, clone ALB/6413R) and RedDot (red).



IHC staining of FFPE human liver carcinoma in colon tissue with recombinant Albumin antibody (clone ALB/6413R). HIER: boil tissue sections in pH 9 10mM Tris with 1mM EDTA for 20 min and allow to cool before testing.



Western blot testing of human liver lysates using recombinant Albumin antibody (clone ALB/6413R). Predicted molecular weight ~69 kDa.



SDS-PAGE analysis of purified, BSA-free recombinant Albumin antibody (clone ALB/6413R) as confirmation of integrity and purity.

## Description

Albumin is a soluble, monomeric protein, which comprises about one half of the blood serum protein. Albumin functions primarily as a carrier protein for steroids, fatty acids, and thyroid hormones and plays a role in stabilizing extracellular fluid volume. Albumin is synthesized in the liver as preproalbumin, which has an N-terminal peptide that is removed before the nascent protein is released from the rough endoplasmic reticulum. The product, proalbumin, is in turn cleaved in the Golgi vesicles to produce the secreted form of albumin.

## Application Notes

Optimal dilution of the recombinant Albumin antibody should be determined by the researcher.

## Immunogen

Recombinant full-length human ALB protein was used as the immunogen for the recombinant Albumin antibody.

## Storage

Aliquot the recombinant Albumin antibody and store frozen at -20°C or colder. Avoid repeated freeze-thaw cycles.

