

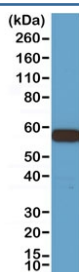
## Recombinant AKT1 Antibody [clone RM252] (R20273)

Catalog No.	Formulation	Size
R20273-0.1ML	Antibody in PBS with 50% glycerol, 1% BSA and 0.09% sodium azide	100 ul

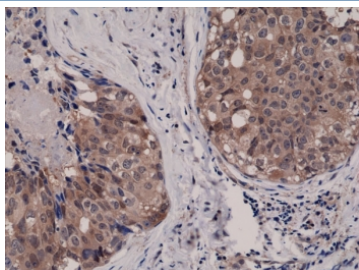
Recombinant **RABBIT MONOCLONAL**

[Bulk quote request](#)

Availability	1-3 business days
Species Reactivity	Human
Predicted Reactivity	Bovine, Mouse, Rat
Format	Purified
Clonality	Recombinant Rabbit Monoclonal
Isotype	Rabbit IgG
Clone Name	RM252
Purity	Protein A purified from animal origin-free supernatant
UniProt	P31749
Gene ID	207
Applications	Immunohistochemistry (FFPE) : 1:500-1:1000 (1) Western Blot : 1:1000-1:2000
Limitations	This recombinant AKT1 antibody is available for research use only.



Western blot testing of 293 cell lysate with recombinant AKT1 antibody at 1:1000.  
Predicted molecular weight ~56 kDa.



IHC testing of FFPE human breast cancer tissue with recombinant AKT1 antibody at 1:1000.

## Description

This recombinant AKT1 antibody may also react to bovine, mouse or rat AKT1, as predicted by immunogen homology

## Application Notes

The stated application concentrations are suggested starting points. Titration of the recombinant AKT1 antibody may be required due to differences in protocols and secondary/substrate sensitivity.

1. A pH6 Citrate buffer or pH9 Tris/EDTA buffer HIER step is recommended for testing of FFPE tissue sections.

## Immunogen

A peptide corresponding to the C-terminus of human Akt1 was used as the immunogen for this recombinant AKT1 antibody.

## Storage

Store the recombinant AKT1 antibody at -20oC (with glycerol) or aliquot and store at -20oC (without glycerol).