

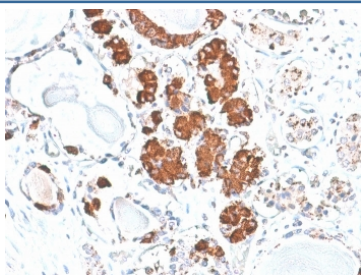
## Recombinant ACTH Antibody (CLIP polypeptide) [clone rCLIP/1407] (V8938)

Catalog No.	Formulation	Size
V8938-100UG	0.2 mg/ml in 1X PBS with 0.1 mg/ml BSA (US sourced), 0.05% sodium azide	100 ug
V8938-20UG	0.2 mg/ml in 1X PBS with 0.1 mg/ml BSA (US sourced), 0.05% sodium azide	20 ug
V8938SAF-100UG	1 mg/ml in 1X PBS; BSA free, sodium azide free	100 ug

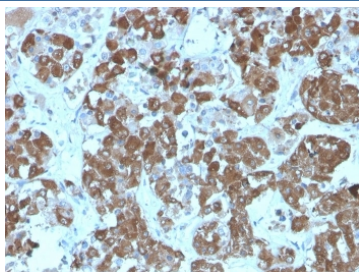
### Recombinant MOUSE MONOCLONAL

[Bulk quote request](#)

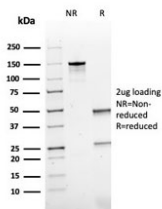
Availability	1-3 business days
Species Reactivity	Human, Mouse and Rat (broad species reactivity predicted)
Format	Purified
Clonality	Recombinant Mouse Monoclonal
Isotype	Mouse IgG1, kappa
Clone Name	rCLIP/1407
Purity	Protein A/G affinity
UniProt	P01189
Localization	Cytoplasmic
Applications	Immunohistochemistry (FFPE) : 1-2ug/ml
Limitations	This recombinant ACTH antibody is available for research use only.



IHC staining of FFPE human pituitary with recombinant ACTH antibody (clone rCLIP/1407). HIER: boil tissue sections in pH 9 10mM Tris with 1mM EDTA for 20 min and allow to cool before testing.



IHC staining of FFPE human pituitary tissue with recombinant ACTH antibody (clone rCLIP/1407). HIER: boil tissue sections in pH 9 10mM Tris with 1mM EDTA for 20 min and allow to cool before testing.



SDS-PAGE analysis of purified, BSA-free recombinant ACTH antibody (clone rCLIP/1407) as confirmation of integrity and purity.

## Description

POMC (pro-opiomelanocortin or corticotropin-lipotropin) is a 267 amino acid polypeptide hormone precursor that goes through extensive, tissue-specific posttranslational processing by convertases. POMC is cleaved into ten hormone chains named NPP, ACTH, alpha-MSH (Melanocyte Stimulating Hormone), beta-MSH, gamma-MSH, CLIP (corticotropin-like intermediary peptide), Lipotropin-beta, Lipotropin-gamma, beta-endorphin and Met-enkephalin. ACTH is also produced by cells of immune system (T-cells, B-cells, and macrophages) in response to stimuli associated with stress. Anti-ACTH is a useful marker in classification of pituitary tumors and the study of pituitary disease. It reacts with ACTH-producing cells (corticotrophs). It also may react with other tumors (e.g. some small cell carcinomas of the lung) causing paraneoplastic syndromes by secreting ACTH.

## Application Notes

Optimal dilution of the recombinant ACTH antibody should be determined by the researcher.

## Immunogen

Amino acids NGAEDSAEAFPLEF from human ACTH was used as the immunogen for the recombinant ACTH antibody. This sequence is from the CLIP or Corticotropin-like intermediary peptide polypeptide of ACTH.

## Storage

Aliquot the recombinant ACTH antibody and store frozen at -20oC or colder. Avoid repeated freeze-thaw cycles.